

TROVE2 antibody - N-terminal region
Rabbit Polyclonal Antibody
Catalog # AI11762**Specification**

TROVE2 antibody - N-terminal region - Product Information

Application	IHC, WB
Primary Accession	P10155
Other Accession	NM_001042369 , NP_001035828
Reactivity	Human, Mouse, Rat, Rabbit, Horse, Bovine, Dog
Predicted Host	Mouse, Pig, Horse, Bovine
Clonality	Rabbit
Calculated MW	Polyclonal 58kDa KDa

TROVE2 antibody - N-terminal region - Additional Information**Gene ID** 6738**Alias Symbol** RO60, SSA2, RORNP**Other Names**

60 kDa SS-A/Ro ribonucleoprotein, 60 kDa Ro protein, 60 kDa ribonucleoprotein Ro, RoRNP, Ro 60 kDa autoantigen, Sjogren syndrome antigen A2, Sjogren syndrome type A antigen, SS-A, TROVE domain family member 2, TROVE2, RO60, SSA2

Format

Liquid. Purified antibody supplied in 1x PBS buffer with 0.09% (w/v) sodium azide and 2% sucrose.

Reconstitution & Storage

Add 50 ul of distilled water. Final anti-TROVE2 antibody concentration is 1 mg/ml in PBS buffer with 2% sucrose. For longer periods of storage, store at 20°C. Avoid repeat freeze-thaw cycles.

Precautions

TROVE2 antibody - N-terminal region is for research use only and not for use in diagnostic or therapeutic procedures.

TROVE2 antibody - N-terminal region - Protein Information**Name** RO60 ([HGNC:11313](#))**Function**

RNA-binding protein that binds to misfolded non-coding RNAs, pre-5S rRNA, and several small cytoplasmic RNA molecules known as Y RNAs (PubMed:18056422, PubMed:26382853). Binds to endogenous Alu retroelements which are induced by type I interferon and stimulate proinflammatory cytokine secretion (PubMed:<a

<http://www.uniprot.org/citations/26382853> target="_blank">26382853). Regulates the expression of Alu retroelements as well as inflammatory genes (PubMed:http://www.uniprot.org/citations/26382853 target="_blank">26382853). May play roles in cilia formation and/or maintenance (By similarity).

Cellular Location

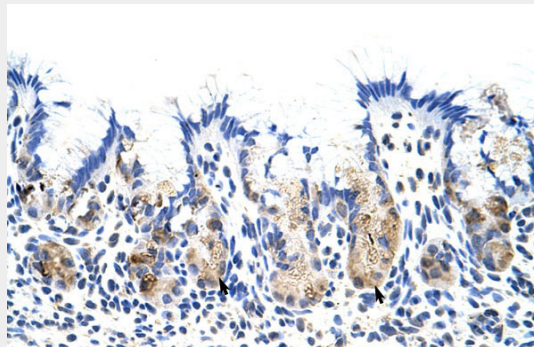
Cytoplasm. Note=Localized in cytoplasmic mRNP granules containing untranslated mRNAs.

TROVE2 antibody - N-terminal region - Protocols

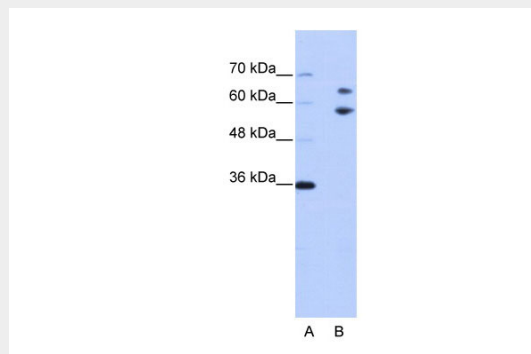
Provided below are standard protocols that you may find useful for product applications.

- [Western Blot](#)
- [Blocking Peptides](#)
- [Dot Blot](#)
- [Immunohistochemistry](#)
- [Immunofluorescence](#)
- [Immunoprecipitation](#)
- [Flow Cytometry](#)
- [Cell Culture](#)

TROVE2 antibody - N-terminal region - Images



Rabbit Anti-TROVE2 Antibody
Paraffin Embedded Tissue: Human Stomach
Cellular Data: Epithelial cells of fundic gland
Antibody Concentration: 4.0-8.0 µg/ml
Magnification: 400X



WB Suggested Anti-TROVE2 Antibody Titration: 0.2-1 µg/ml
ELISA Titer: 1:312500

Positive Control: Jurkat cell lysate

TROVE2 antibody - N-terminal region - References

Hennig,J., (2005) J. Biol. Chem. 280 (39), 33250-33261
Reconstitution and Storage: For short term use, store at 2-8C up to 1 week. For long term storage, store at -20C in small aliquots to prevent freeze-thaw cycles.