

CPNE1 antibody - middle region
Rabbit Polyclonal Antibody
Catalog # AI11757**Specification**

CPNE1 antibody - middle region - Product Information

Application	WB
Primary Accession	O99829
Other Accession	NM_003915 , NP_003906
Reactivity	Human, Mouse, Rat, Rabbit, Zebrafish, Pig, Sheep, Horse, Bovine, Dog
Predicted	Human, Mouse, Rabbit, Zebrafish, Pig, Chicken, Sheep, Horse, Bovine, Dog
Host	Rabbit
Clonality	Polyclonal
Calculated MW	59kDa KDa

CPNE1 antibody - middle region - Additional Information**Gene ID** 8904

Alias Symbol	COPN1, CPN1, MGC1142
Other Names	
Copine-1, Copine I, CPNE1, CPN1	

Format

Liquid. Purified antibody supplied in 1x PBS buffer with 0.09% (w/v) sodium azide and 2% sucrose.

Reconstitution & Storage

Add 50 ul of distilled water. Final anti-CPNE1 antibody concentration is 1 mg/ml in PBS buffer with 2% sucrose. For longer periods of storage, store at 20°C. Avoid repeat freeze-thaw cycles.

Precautions

CPNE1 antibody - middle region is for research use only and not for use in diagnostic or therapeutic procedures.

CPNE1 antibody - middle region - Protein Information**Name** CPNE1 ([HGNC:2314](#))**Synonyms** CPN1**Function**Calcium-dependent phospholipid-binding protein that plays a role in calcium-mediated intracellular processes (PubMed: <http://www.uniprot.org/citations/14674885> target="_blank">14674885). Involved in the TNF-alpha receptor signaling pathway in a calcium-dependent manner (PubMed: <http://www.uniprot.org/citations/14674885> target="_blank">14674885). Exhibits calcium-dependent phospholipid binding properties

(PubMed:19539605, PubMed:9430674). Plays a role in neuronal progenitor cell differentiation; induces neurite outgrowth via a AKT-dependent signaling cascade and calcium- independent manner (PubMed:23263657, PubMed:25450385). May recruit target proteins to the cell membrane in a calcium-dependent manner (PubMed:12522145). May function in membrane trafficking (PubMed:9430674). Involved in TNF-alpha-induced NF-kappa-B transcriptional repression by inducing endoprotease processing of the transcription factor NF-kappa-B p65/RELA subunit (PubMed:18212740). Also induces endoprotease processing of NF-kappa-B p50/NFKB1, p52/NFKB2, RELB and REL (PubMed:18212740).

Cellular Location

Nucleus. Cytoplasm. Cell membrane Note=Translocates to the cell membrane in a calcium-dependent manner (PubMed:21087455, PubMed:25450385).

Tissue Location

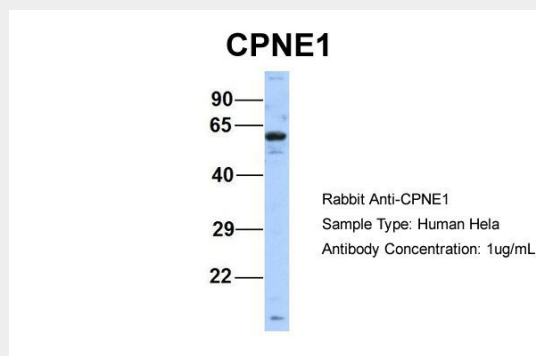
Expressed in neutrophils (at protein level) (PubMed:12949241). Widely expressed. Expressed in the brain. Expressed in neutrophil precursors from bone marrow and peripheral blood (PubMed:12949241).

CPNE1 antibody - middle region - Protocols

Provided below are standard protocols that you may find useful for product applications.

- [Western Blot](#)
- [Blocking Peptides](#)
- [Dot Blot](#)
- [Immunohistochemistry](#)
- [Immunofluorescence](#)
- [Immunoprecipitation](#)
- [Flow Cytometry](#)
- [Cell Culture](#)

CPNE1 antibody - middle region - Images



Host:Rabbit
Target Name:CPNE1

Sample Tissue:Human HeLa

Antibody Dilution: 1.0µg/mlCPNE1 is supported by BioGPS gene expression data to be expressed in HeLa

CPNE1 antibody - middle region - References

Ma,J., (2007) Atherosclerosis 191 (1), 63-72 Reconstitution and Storage:For short term use, store at 2-8C up to 1 week. For long term storage, store at -20C in small aliquots to prevent freeze-thaw cycles.