

**RAE1 antibody - C-terminal region**  
**Rabbit Polyclonal Antibody**  
**Catalog # AI11726****Specification**

---

**RAE1 antibody - C-terminal region - Product Information**

Application	IHC, WB
Primary Accession	<a href="#">P78406</a>
Other Accession	<a href="#">NM_001015885</a> , <a href="#">NP_001015885</a>
Reactivity	Human, Mouse, Rat, Rabbit, Zebrafish, Pig, Horse, Bovine, Dog
Predicted	Human, Mouse, Rat, Rabbit, Zebrafish, Chicken, Bovine, Dog
Host	Rabbit
Clonality	Polyclonal
Calculated MW	40kDa KDa

**RAE1 antibody - C-terminal region - Additional Information****Gene ID** 8480**Alias Symbol** **MIG14, MRNP41, Mnrp41, dj481F12.3, dj800J21.1****Other Names**

mRNA export factor, Rae1 protein homolog, mRNA-associated protein mrnp 41, RAE1, MRNP41

**Format**

Liquid. Purified antibody supplied in 1x PBS buffer with 0.09% (w/v) sodium azide and 2% sucrose.

**Reconstitution & Storage**

Add 50 ul of distilled water. Final anti-RAE1 antibody concentration is 1 mg/ml in PBS buffer with 2% sucrose. For longer periods of storage, store at 20°C. Avoid repeat freeze-thaw cycles.

**Precautions**

RAE1 antibody - C-terminal region is for research use only and not for use in diagnostic or therapeutic procedures.

**RAE1 antibody - C-terminal region - Protein Information****Name** RAE1**Synonyms** MRNP41**Function**

Acts as a mRNA export factor involved in nucleocytoplasmic transport (PubMed:&lt;a href="http://www.uniprot.org/citations/20498086" target="\_blank"&gt;20498086&lt;/a&gt;, PubMed:&lt;a href="http://www.uniprot.org/citations/33849972" target="\_blank"&gt;33849972&lt;/a&gt;). Plays a role in mitotic bipolar spindle formation (PubMed:&lt;a href="http://www.uniprot.org/citations/17172455" target="\_blank"&gt;17172455&lt;/a&gt;)

target="\_blank">17172455</a>). May function in attaching cytoplasmic mRNPs to the cytoskeleton both directly or indirectly (PubMed:<a href="http://www.uniprot.org/citations/17172455" target="\_blank">17172455</a>).

#### Cellular Location

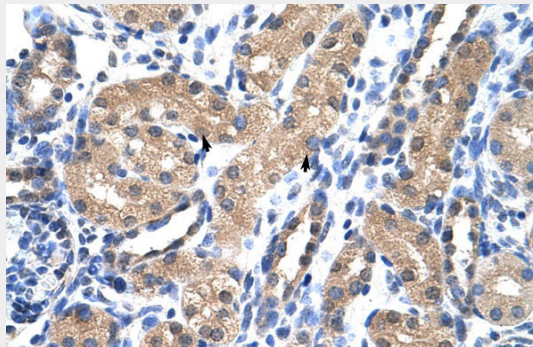
Cytoplasm. Nucleus. Cytoplasm, cytoskeleton, spindle pole. Nucleus envelope. Note=Recruited from interphase nuclei to spindle MTs during mitosis.

#### RAE1 antibody - C-terminal region - Protocols

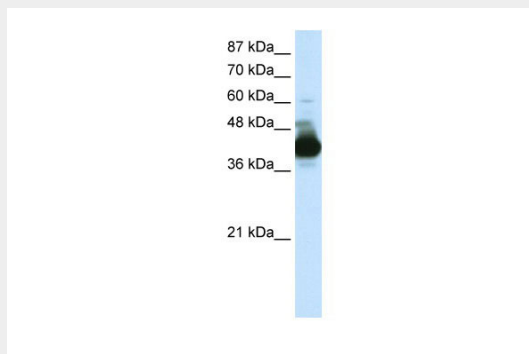
Provided below are standard protocols that you may find useful for product applications.

- [Western Blot](#)
- [Blocking Peptides](#)
- [Dot Blot](#)
- [Immunohistochemistry](#)
- [Immunofluorescence](#)
- [Immunoprecipitation](#)
- [Flow Cytometry](#)
- [Cell Culture](#)

#### RAE1 antibody - C-terminal region - Images



Rabbit Anti-RAE1 Antibody  
Paraffin Embedded Tissue: Human Kidney  
Cellular Data: Epithelial cells of renal tubule  
Antibody Concentration: 4.0-8.0 µg/ml  
Magnification: 400X



WB Suggested Anti-RAE1 Antibody Titration: 0.2-1 µg/ml  
ELISA Titer: 1:312500

Positive Control: Jurkat cell lysate

RAE1 is strongly supported by BioGPS gene expression data to be expressed in Human Jurkat cells

**RAE1 antibody - C-terminal region - References**

Blower, M.D., (2005) Cell 121 (2), 223-234  
Reconstitution and Storage: For short term use, store at 2-8C up to 1 week. For long term storage, store at -20C in small aliquots to prevent freeze-thaw cycles.