

RAE1 antibody - C-terminal region
Rabbit Polyclonal Antibody
Catalog # AI11725**Specification**

RAE1 antibody - C-terminal region - Product Information

Application	IHC, WB
Primary Accession	P78406
Other Accession	NM_001015885 , NP_001015885
Reactivity	Human, Mouse, Rat, Rabbit, Zebrafish, Pig, Horse, Bovine, Dog
Predicted	Human, Mouse, Rat, Rabbit, Zebrafish, Chicken, Bovine, Dog
Host	Rabbit
Clonality	Polyclonal
Calculated MW	40kDa KDa

RAE1 antibody - C-terminal region - Additional Information**Gene ID** 8480**Alias Symbol** [MIG14](#), [MRNP41](#), [Mnnp41](#), [dj481F12.3](#), [dj800J21.1](#)**Other Names**

mRNA export factor, Rae1 protein homolog, mRNA-associated protein mrnp 41, RAE1, MRNP41

Format

Liquid. Purified antibody supplied in 1x PBS buffer with 0.09% (w/v) sodium azide and 2% sucrose.

Reconstitution & Storage

Add 50 ul of distilled water. Final anti-RAE1 antibody concentration is 1 mg/ml in PBS buffer with 2% sucrose. For longer periods of storage, store at 20°C. Avoid repeat freeze-thaw cycles.

Precautions

RAE1 antibody - C-terminal region is for research use only and not for use in diagnostic or therapeutic procedures.

RAE1 antibody - C-terminal region - Protein Information**Name** RAE1**Synonyms** MRNP41**Function**

Acts as a mRNA export factor involved in nucleocytoplasmic transport (PubMed:20498086, PubMed:33849972). Plays a role in mitotic bipolar spindle formation (PubMed:17172455)

target="_blank">17172455). May function in attaching cytoplasmic mRNPs to the cytoskeleton both directly or indirectly (PubMed:17172455).

Cellular Location

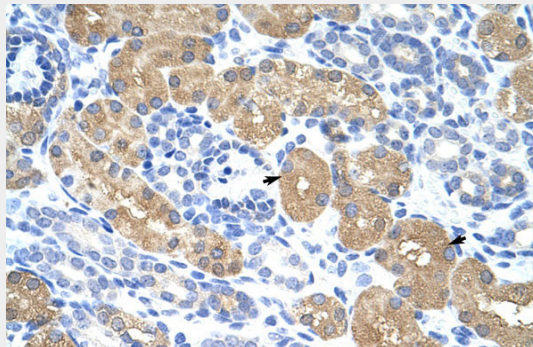
Cytoplasm. Nucleus. Cytoplasm, cytoskeleton, spindle pole. Nucleus envelope. Note=Recruited from interphase nuclei to spindle MTs during mitosis.

RAE1 antibody - C-terminal region - Protocols

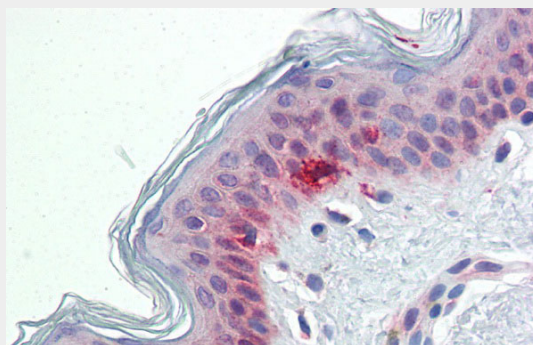
Provided below are standard protocols that you may find useful for product applications.

- [Western Blot](#)
- [Blocking Peptides](#)
- [Dot Blot](#)
- [Immunohistochemistry](#)
- [Immunofluorescence](#)
- [Immunoprecipitation](#)
- [Flow Cytometry](#)
- [Cell Culture](#)

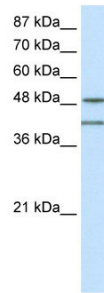
RAE1 antibody - C-terminal region - Images



Rabbit Anti-RAE1 Antibody
Paraffin Embedded Tissue: Human Kidney
Cellular Data: Epithelial cells of renal tubule
Antibody Concentration: 4.0-8.0 µg/ml
Magnification: 400X



Immunohistochemistry with Human Skin lysate tissue at an antibody concentration of 5.0µg/ml using anti-RAE1 antibody (AI11725)



WB Suggested Anti-RAE1 Antibody Titration: 0.2-1 $\mu\text{g/ml}$

ELISA Titer: 1:312500

Positive Control: Jurkat cell lysate

RAE1 is strongly supported by BioGPS gene expression data to be expressed in Human Jurkat cells

RAE1 antibody - C-terminal region - References

Blower, M.D., (2005) Cell 121 (2), 223-234
Reconstitution and Storage: For short term use, store at 2-8°C up to 1 week. For long term storage, store at -20°C in small aliquots to prevent freeze-thaw cycles.