

RPL9 antibody - C-terminal region
Rabbit Polyclonal Antibody
Catalog # AI11700**Specification**

RPL9 antibody - C-terminal region - Product Information

Application	WB
Primary Accession	P32969
Other Accession	NM_000661 , NP_000652
Reactivity	Human, Mouse, Rat, Rabbit, Zebrafish, Horse, Bovine, Dog
Predicted	Human, Mouse, Rat, Zebrafish, Chicken, Dog
Host	Rabbit
Clonality	Polyclonal
Calculated MW	21kDa KDa

RPL9 antibody - C-terminal region - Additional Information**Gene ID** 6133**Alias Symbol** L9, NPC-A-16
Other Names
60S ribosomal protein L9, RPL9**Format**

Liquid. Purified antibody supplied in 1x PBS buffer with 0.09% (w/v) sodium azide and 2% sucrose.

Reconstitution & Storage

Add 100 ul of distilled water. Final anti-RPL9 antibody concentration is 1 mg/ml in PBS buffer with 2% sucrose. For longer periods of storage, store at 20°C. Avoid repeat freeze-thaw cycles.

Precautions

RPL9 antibody - C-terminal region is for research use only and not for use in diagnostic or therapeutic procedures.

RPL9 antibody - C-terminal region - Protein Information**Name** RPL9**Function**Component of the large ribosomal subunit (PubMed: [23636399](http://www.uniprot.org/citations/23636399), PubMed: [32669547](http://www.uniprot.org/citations/32669547)). The ribosome is a large ribonucleoprotein complex responsible for the synthesis of proteins in the cell (PubMed: [23636399](http://www.uniprot.org/citations/23636399), PubMed: [32669547](http://www.uniprot.org/citations/32669547)).

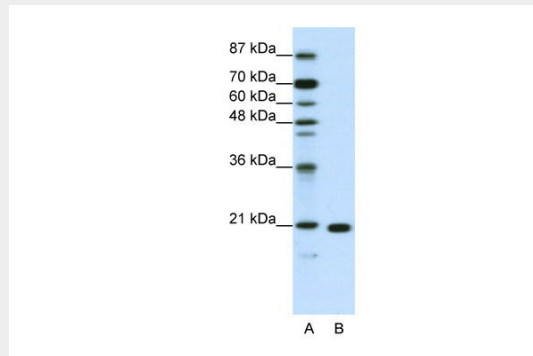
Cellular Location
Cytoplasm.

RPL9 antibody - C-terminal region - Protocols

Provided below are standard protocols that you may find useful for product applications.

- [Western Blot](#)
- [Blocking Peptides](#)
- [Dot Blot](#)
- [Immunohistochemistry](#)
- [Immunofluorescence](#)
- [Immunoprecipitation](#)
- [Flow Cytometry](#)
- [Cell Culture](#)

RPL9 antibody - C-terminal region - Images



WB Suggested Anti-RPL9 Antibody Titration: 1.25µg/ml

ELISA Titer: 1:312500

Positive Control: Jurkat cell lysate

RPL9 is supported by BioGPS gene expression data to be expressed in Jurkat

RPL9 antibody - C-terminal region - References

Oh, J.H., (2005) Mamm. Genome 16 (12), 942-954
Reconstitution and Storage: For short term use, store at 2-8C up to 1 week. For long term storage, store at -20C in small aliquots to prevent freeze-thaw cycles.