

**ZFPM1 antibody - middle region**  
**Rabbit Polyclonal Antibody**  
**Catalog # AI11654**

**Specification**

---

**ZFPM1 antibody - middle region - Product Information**

Application	<b>WB</b>
Primary Accession	<a href="#">O8IX07</a>
Other Accession	<a href="#">NM_153813</a> , <a href="#">NP_722520</a>
Reactivity	<b>Human, Bovine</b>
Predicted	<b>Bovine</b>
Host	<b>Rabbit</b>
Clonality	<b>Polyclonal</b>
Calculated MW	<b>105kDa KDa</b>

**ZFPM1 antibody - middle region - Additional Information**

**Gene ID** 161882

**Alias Symbol** **FOG, FOG1, ZNF408, ZNF89A**

**Other Names**

Zinc finger protein ZFPM1, Friend of GATA protein 1, FOG-1, Friend of GATA 1, Zinc finger protein 89A, Zinc finger protein multitype 1, ZFPM1, FOG1, ZFN89A

**Format**

Liquid. Purified antibody supplied in 1x PBS buffer with 0.09% (w/v) sodium azide and 2% sucrose.

**Reconstitution & Storage**

Add 50 ul of distilled water. Final anti-ZFPM1 antibody concentration is 1 mg/ml in PBS buffer with 2% sucrose. For longer periods of storage, store at 20°C. Avoid repeat freeze-thaw cycles.

**Precautions**

ZFPM1 antibody - middle region is for research use only and not for use in diagnostic or therapeutic procedures.

**ZFPM1 antibody - middle region - Protein Information**

**Name** ZFPM1

**Synonyms** FOG1, ZFN89A

**Function**

Transcription regulator that plays an essential role in erythroid and megakaryocytic cell differentiation. Essential cofactor that acts via the formation of a heterodimer with transcription factors of the GATA family GATA1, GATA2 and GATA3. Such heterodimer can both activate or repress transcriptional activity, depending on the cell and promoter context. The heterodimer formed with GATA proteins is essential to activate expression of genes such as NFE2, ITGA2B, alpha- and beta-globin, while it represses expression of KLF1. May be involved in regulation of

some genes in gonads. May also be involved in cardiac development, in a non-redundant way with ZFPM2/FOG2 (By similarity).

#### Cellular Location

Nucleus.

#### Tissue Location

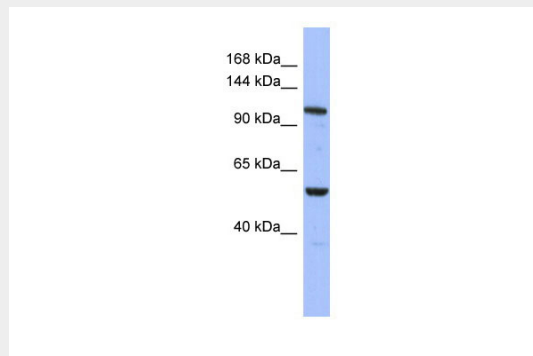
Mainly expressed in hematopoietic tissues. Also expressed in adult cerebellum, stomach, lymph node, liver and pancreas Expressed in fetal heart, liver and spleen

### ZFPM1 antibody - middle region - Protocols

Provided below are standard protocols that you may find useful for product applications.

- [Western Blot](#)
- [Blocking Peptides](#)
- [Dot Blot](#)
- [Immunohistochemistry](#)
- [Immunofluorescence](#)
- [Immunoprecipitation](#)
- [Flow Cytometry](#)
- [Cell Culture](#)

### ZFPM1 antibody - middle region - Images



WB Suggested Anti-ZFPM1 Antibody Titration: 0.2-1  $\mu$ g/ml

ELISA Titer: 1:62500

Positive Control: THP-1 cell lysate

### ZFPM1 antibody - middle region - References

Sugiyama,D., (2008) Blood 111 (4), 1924-1932 Reconstitution and Storage:For short term use, store at 2-8C up to 1 week. For long term storage, store at -20C in small aliquots to prevent freeze-thaw cycles.