

RFX4 antibody - N-terminal region
Rabbit Polyclonal Antibody
Catalog # AI11603**Specification**

RFX4 antibody - N-terminal region - Product Information

Application	WB
Primary Accession	O33E94
Other Accession	NM_002920 , NP_002911
Reactivity	Human, Mouse, Rat, Rabbit, Zebrafish, Pig, Horse, Bovine, Dog
Predicted	Human, Mouse, Rat, Rabbit, Zebrafish, Pig, Chicken, Bovine
Host	Rabbit
Clonality	Polyclonal
Calculated MW	64kDa KDa

RFX4 antibody - N-terminal region - Additional Information**Gene ID** 5992**Alias Symbol** NYD-SP10**Other Names**

Transcription factor RFX4, Regulatory factor X 4, Testis development protein NYD-SP10, RFX4

Format

Liquid. Purified antibody supplied in 1x PBS buffer with 0.09% (w/v) sodium azide and 2% sucrose.

Reconstitution & Storage

Add 50 ul of distilled water. Final anti-RFX4 antibody concentration is 1 mg/ml in PBS buffer with 2% sucrose. For longer periods of storage, store at 20°C. Avoid repeat freeze-thaw cycles.

Precautions

RFX4 antibody - N-terminal region is for research use only and not for use in diagnostic or therapeutic procedures.

RFX4 antibody - N-terminal region - Protein Information**Name** RFX4**Function**

Transcription factor that plays a role in early brain development. May activate transcription by interacting directly with the X-box. May activate transcription from CX3CL1 promoter through the X-box during brain development. May be required for neural tube ciliogenesis during embryogenesis (By similarity).

Cellular Location

Nucleus {ECO:0000255|PROSITE-ProRule:PRU00858}.

Tissue Location

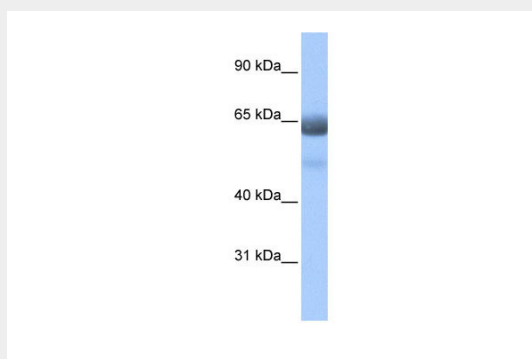
Isoform 1: Expressed in brain and gliomas (at protein level). Isoform 2: Testis-specific (at protein level). Isoform 3: Testis-specific (at protein level). Isoform 3: Expressed at a higher level in adult testes and ejaculated spermatozoa than in fetal testes Isoform 4: Testis-specific.

RFX4 antibody - N-terminal region - Protocols

Provided below are standard protocols that you may find useful for product applications.

- [Western Blot](#)
- [Blocking Peptides](#)
- [Dot Blot](#)
- [Immunohistochemistry](#)
- [Immunofluorescence](#)
- [Immunoprecipitation](#)
- [Flow Cytometry](#)
- [Cell Culture](#)

RFX4 antibody - N-terminal region - Images



WB Suggested Anti-RFX4 Antibody Titration: 0.2-1 $\mu\text{g/ml}$

ELISA Titer: 1:312500

Positive Control: Human Lung

RFX4 antibody - N-terminal region - References

Zhang, D., (2008) J. Biol. Chem. 283 (13), 8580-8590 Reconstitution and Storage: For short term use, store at 2-8C up to 1 week. For long term storage, store at -20C in small aliquots to prevent freeze-thaw cycles.