

**CBLL1 antibody - C-terminal region**  
**Rabbit Polyclonal Antibody**  
**Catalog # AI11594****Specification**

---

**CBLL1 antibody - C-terminal region - Product Information**

Application	WB
Primary Accession	<a href="#">O75N03</a>
Other Accession	<a href="#">NM_024814</a> , <a href="#">NP_079090</a>
Reactivity	Human, Mouse, Rat, Zebrafish, Pig, Horse, Bovine, Dog
Predicted Host	Human, Mouse, Horse, Bovine, Dog
Clonality	Rabbit
Calculated MW	Polyclonal 55kDa KDa

**CBLL1 antibody - C-terminal region - Additional Information****Gene ID** 79872**Alias Symbol** HAKAI, RNF188**Other Names**

E3 ubiquitin-protein ligase Hakai, 6.3.2.-, Casitas B-lineage lymphoma-transforming sequence-like protein 1, RING finger protein 188, c-Cbl-like protein 1, CBLL1, HAKAI, RNF188

**Format**

Liquid. Purified antibody supplied in 1x PBS buffer with 0.09% (w/v) sodium azide and 2% sucrose.

**Reconstitution & Storage**

Add 100 ul of distilled water. Final anti-CBLL1 antibody concentration is 1 mg/ml in PBS buffer with 2% sucrose. For longer periods of storage, store at 20°C. Avoid repeat freeze-thaw cycles.

**Precautions**

CBLL1 antibody - C-terminal region is for research use only and not for use in diagnostic or therapeutic procedures.

**CBLL1 antibody - C-terminal region - Protein Information****Name** CBLL1 ([HGNC:21225](#))**Function**

E3 ubiquitin-protein ligase that mediates ubiquitination of several tyrosine-phosphorylated Src substrates, including CDH1, CTTN and DOK1 (By similarity). Targets CDH1 for endocytosis and degradation (By similarity). Associated component of the WMM complex, a complex that mediates N6-methyladenosine (m6A) methylation of RNAs, a modification that plays a role in the efficiency of mRNA splicing and RNA processing (PubMed:&lt;a href="http://www.uniprot.org/citations/29507755" target="\_blank"&gt;29507755&lt;/a&gt;). Its function in the WMM complex is unknown (PubMed:&lt;a href="http://www.uniprot.org/citations/29507755"

target="\_blank">29507755</a>).

### Cellular Location

Nucleus speckle. Nucleus, nucleoplasm. Cytoplasm {ECO:0000250|UniProtKB:Q9JIY2}.

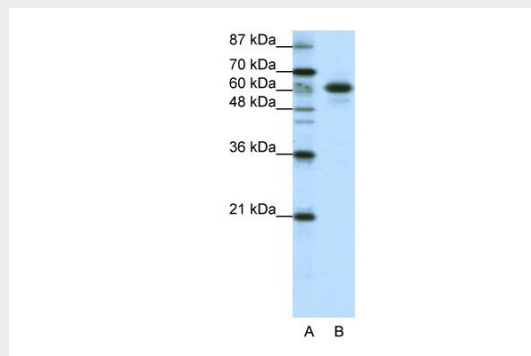
Note=Mainly nuclear with some fraction located in the cytoplasm. ZC3H13 is required to anchor component of the MACOM subcomplex, such as VIRMA, in the nucleus {ECO:0000250|UniProtKB:Q9JIY2}

### CBLL1 antibody - C-terminal region - Protocols

Provided below are standard protocols that you may find useful for product applications.

- [Western Blot](#)
- [Blocking Peptides](#)
- [Dot Blot](#)
- [Immunohistochemistry](#)
- [Immunofluorescence](#)
- [Immunoprecipitation](#)
- [Flow Cytometry](#)
- [Cell Culture](#)

### CBLL1 antibody - C-terminal region - Images



WB Suggested Anti-CBLL1 Antibody Titration: 1.25µg/ml

ELISA Titer: 1:62500

Positive Control: HepG2 cell lysate

### CBLL1 antibody - C-terminal region - References

Strausberg, R.L., (2004) J. Cell. Sci. 117 (PT 7), 989-998  
Reconstitution and Storage: For short term use, store at 2-8C up to 1 week. For long term storage, store at -20C in small aliquots to prevent freeze-thaw cycles.  
Publications: Horiuchi, K. et al. Identification of Wilms' Tumor 1-associating Protein Complex and Its Role in Alternative Splicing and the Cell Cycle. J. Biol. Chem. 288, 33292-302 (2013). WB, Human, Rat, Mouse, Bovine, H, Dog, Zebrafish, Pig24100041