

**LASS4 antibody - N-terminal region**  
**Rabbit Polyclonal Antibody**  
**Catalog # AI11587**

**Specification**

---

**LASS4 antibody - N-terminal region - Product Information**

Application	WB
Primary Accession	<a href="#">O9HA82</a>
Other Accession	<a href="#">NM_024552</a> , <a href="#">NP_078828</a>
Reactivity	Human, Mouse, Rat, Pig, Horse, Dog
Predicted	Pig
Host	Rabbit
Clonality	Polyclonal
Calculated MW	46kDa KDa

**LASS4 antibody - N-terminal region - Additional Information**

**Gene ID** 79603

**Alias Symbol** CerS4, FLJ12089, Trh1, LASS4

**Other Names**

Ceramide synthase 4, CerS4, LAG1 longevity assurance homolog 4, CERS4, LASS4

**Format**

Liquid. Purified antibody supplied in 1x PBS buffer with 0.09% (w/v) sodium azide and 2% sucrose.

**Reconstitution & Storage**

Add 50 ul of distilled water. Final anti-LASS4 antibody concentration is 1 mg/ml in PBS buffer with 2% sucrose. For longer periods of storage, store at 20°C. Avoid repeat freeze-thaw cycles.

**Precautions**

LASS4 antibody - N-terminal region is for research use only and not for use in diagnostic or therapeutic procedures.

**LASS4 antibody - N-terminal region - Protein Information**

**Name** CERS4 {ECO:0000303|PubMed:17977534, ECO:0000312|HGNC:HGNC:23747}

**Function**

Ceramide synthase that catalyzes formation of ceramide from sphinganine and acyl-CoA substrates, with high selectivity toward long and very-long chains (C18:0-C22:0) as acyl donor.

**Cellular Location**

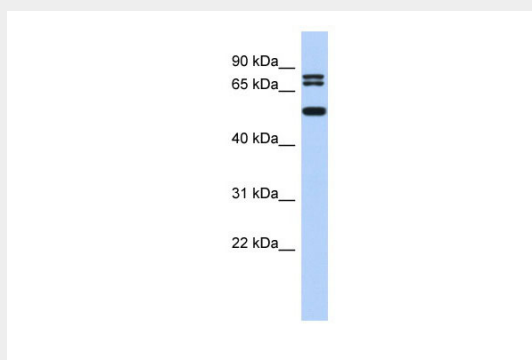
Endoplasmic reticulum membrane {ECO:0000250|UniProtKB:Q9D6J1}; Multi-pass membrane protein

## LASS4 antibody - N-terminal region - Protocols

Provided below are standard protocols that you may find useful for product applications.

- [Western Blot](#)
- [Blocking Peptides](#)
- [Dot Blot](#)
- [Immunohistochemistry](#)
- [Immunofluorescence](#)
- [Immunoprecipitation](#)
- [Flow Cytometry](#)
- [Cell Culture](#)

## LASS4 antibody - N-terminal region - Images



WB Suggested Anti-LASS4 Antibody Titration: 0.2-1 µg/ml

ELISA Titer: 1:312500

Positive Control: SH-SY5Y cell lysate

## LASS4 antibody - N-terminal region - References

Gerhard, D.S., Genome Res. 14 (10B), 2121-2127 (2004) Reconstitution and Storage: For short term use, store at 2-8°C up to 1 week. For long term storage, store at -20°C in small aliquots to prevent freeze-thaw cycles.