

NR2F2 antibody - C-terminal region
Rabbit Polyclonal Antibody
Catalog # AI11557**Specification**

NR2F2 antibody - C-terminal region - Product Information

Application	WB
Primary Accession	P24468
Other Accession	NM_021005 , NP_066285
Reactivity	Human, Mouse, Rat, Rabbit, Zebrafish, Pig, Sheep, Horse, Bovine, Dog
Predicted	Mouse, Rat, Rabbit, Zebrafish, Pig, Chicken, Sheep, Bovine
Host	Rabbit
Clonality	Polyclonal
Calculated MW	46kDa KDa

NR2F2 antibody - C-terminal region - Additional Information**Gene ID** 7026**Alias Symbol** **ARP1, NF-E3, NR2F1, SVP40, COUPTFB, TFCOUP2, COUPTFII****Other Names**

COUP transcription factor 2, COUP-TF2, Apolipoprotein A-I regulatory protein 1, ARP-1, COUP transcription factor II, COUP-TF II, Nuclear receptor subfamily 2 group F member 2, NR2F2, ARP1, TFCOUP2

Format

Liquid. Purified antibody supplied in 1x PBS buffer with 0.09% (w/v) sodium azide and 2% sucrose.

Reconstitution & Storage

Add 100 ul of distilled water. Final anti-NR2F2 antibody concentration is 1 mg/ml in PBS buffer with 2% sucrose. For longer periods of storage, store at 20°C. Avoid repeat freeze-thaw cycles.

Precautions

NR2F2 antibody - C-terminal region is for research use only and not for use in diagnostic or therapeutic procedures.

NR2F2 antibody - C-terminal region - Protein Information**Name** NR2F2**Synonyms** ARP1, TFCOUP2**Function**

Ligand-activated transcription factor. Activated by high concentrations of 9-cis-retinoic acid and all-trans-retinoic acid, but not by dexamethasone, cortisol or progesterone (in vitro). Regulation of

the apolipoprotein A-I gene transcription. Binds to DNA site A. May be required to establish ovary identity during early gonad development (PubMed:29478779).

Cellular Location

Nucleus.

Tissue Location

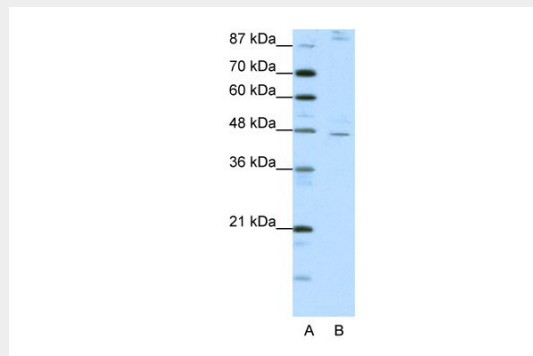
Ubiquitous. Expressed in the stromal cells of developing fetal ovaries (PubMed:29478779)

NR2F2 antibody - C-terminal region - Protocols

Provided below are standard protocols that you may find useful for product applications.

- [Western Blot](#)
- [Blocking Peptides](#)
- [Dot Blot](#)
- [Immunohistochemistry](#)
- [Immunofluorescence](#)
- [Immunoprecipitation](#)
- [Flow Cytometry](#)
- [Cell Culture](#)

NR2F2 antibody - C-terminal region - Images



WB Suggested Anti-NR2F2 Antibody Titration: 1.25µg/ml

ELISA Titer: 1:1562500

Positive Control: HepG2 cell lysate

NR2F2 antibody - C-terminal region - References

Sato, Y., et al., (2003) J. Clin. Endocrinol. Metab. 88 (7), 3415-3420
Reconstitution and Storage: For short term use, store at 2-8C up to 1 week. For long term storage, store at -20C in small aliquots to prevent freeze-thaw cycles.
Publications: Cho, K., Yi, H., Tserentsoodol, N., Searle, K. & Ferreira, P. A. Neuroprotection resulting from insufficiency of RANBP2 is associated with the modulation of protein and lipid homeostasis of functionally diverse but linked pathways in response to oxidative stress. Dis. Model. Mech. 3, 595-604
WB, IHC, Bovine, Zebrafish, Pig, Sheep, Mouse, Dog, Human, H, Rabbit, Rat, Guinea pig 20682751