

BATF3 antibody - N-terminal region
Rabbit Polyclonal Antibody
Catalog # AI11540**Specification**

BATF3 antibody - N-terminal region - Product Information

Application	WB
Primary Accession	O9NR55
Other Accession	NM_018664 , NP_061134
Reactivity	Human, Horse, Yeast, Bovine, Dog
Predicted	Human, Pig, Bovine
Host	Rabbit
Clonality	Polyclonal
Calculated MW	14kDa KDa

BATF3 antibody - N-terminal region - Additional Information**Gene ID** 55509**Alias Symbol** JUNDM1, SNFT, JDP1**Other Names**

Basic leucine zipper transcriptional factor ATF-like 3, B-ATF-3, 21 kDa small nuclear factor isolated from T-cells, Jun dimerization protein p21SNFT, BATF3, SNFT

Format

Liquid. Purified antibody supplied in 1x PBS buffer with 0.09% (w/v) sodium azide and 2% sucrose.

Reconstitution & Storage

Add 50 ul of distilled water. Final anti-BATF3 antibody concentration is 1 mg/ml in PBS buffer with 2% sucrose. For longer periods of storage, store at 20°C. Avoid repeat freeze-thaw cycles.

Precautions

BATF3 antibody - N-terminal region is for research use only and not for use in diagnostic or therapeutic procedures.

BATF3 antibody - N-terminal region - Protein Information**Name** BATF3**Synonyms** SNFT**Function**

AP-1 family transcription factor that controls the differentiation of CD8(+) thymic conventional dendritic cells in the immune system. Required for development of CD8-alpha(+) classical dendritic cells (cDCs) and related CD103(+) dendritic cells that cross-present antigens to CD8 T-cells and produce interleukin-12 (IL12) in response to pathogens (By similarity). Acts via the formation of a heterodimer with JUN family proteins that recognizes and binds DNA sequence 5'-TGA[CG]TCA-3' and regulates expression of target genes.

Cellular Location

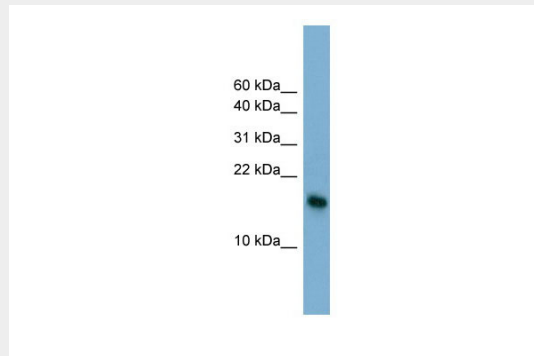
Nucleus {ECO:0000255|PROSITE-ProRule:PRU00978, ECO:0000269|PubMed:12087103}

BATF3 antibody - N-terminal region - Protocols

Provided below are standard protocols that you may find useful for product applications.

- [Western Blot](#)
- [Blocking Peptides](#)
- [Dot Blot](#)
- [Immunohistochemistry](#)
- [Immunofluorescence](#)
- [Immunoprecipitation](#)
- [Flow Cytometry](#)
- [Cell Culture](#)

BATF3 antibody - N-terminal region - Images



WB Suggested Anti-BATF3 Antibody Titration: 0.2-1 μ g/ml

ELISA Titer: 1:312500

Positive Control: HT1080 cell lysate

BATF3 antibody - N-terminal region - References

Bower, K.E., (2004) Oncogene 23 (54), 8805-8814 Reconstitution and Storage: For short term use, store at 2-8C up to 1 week. For long term storage, store at -20C in small aliquots to prevent freeze-thaw cycles.