

PBRM1 antibody - middle region
Rabbit Polyclonal Antibody
Catalog # AI11530

Specification

PBRM1 antibody - middle region - Product Information

Application	WB
Primary Accession	Q86U86-4
Other Accession	NM_018313 , NP_060783
Reactivity	Human, Mouse, Rat, Zebrafish, Horse, Bovine, Dog
Predicted	Human, Mouse, Rat, Rabbit, Zebrafish, Pig, Chicken, Horse, Bovine, Dog
Host	Rabbit
Clonality	Polyclonal
Calculated MW	181kDa KDa

PBRM1 antibody - middle region - Additional Information

Alias Symbol **BAF180, MGC156155, MGC156156, PB1**
Format

Liquid. Purified antibody supplied in 1x PBS buffer with 0.09% (w/v) sodium azide and 2% sucrose.

Reconstitution & Storage

Add 50 ul of distilled water. Final anti-PBRM1 antibody concentration is 1 mg/ml in PBS buffer with 2% sucrose. For longer periods of storage, store at 20°C. Avoid repeat freeze-thaw cycles.

Precautions

PBRM1 antibody - middle region is for research use only and not for use in diagnostic or therapeutic procedures.

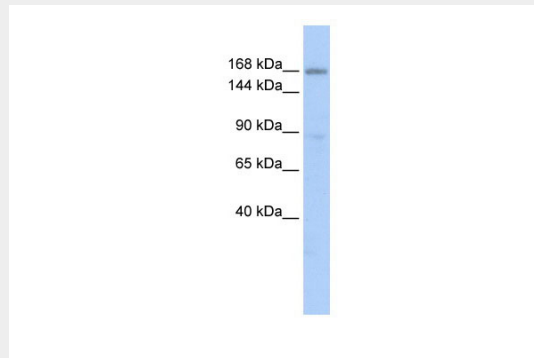
PBRM1 antibody - middle region - Protein Information

PBRM1 antibody - middle region - Protocols

Provided below are standard protocols that you may find useful for product applications.

- [Western Blot](#)
- [Blocking Peptides](#)
- [Dot Blot](#)
- [Immunohistochemistry](#)
- [Immunofluorescence](#)
- [Immunoprecipitation](#)
- [Flow Cytometry](#)
- [Cell Culture](#)

PBRM1 antibody - middle region - Images

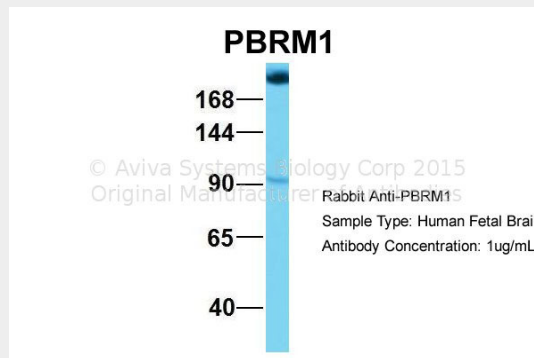


WB Suggested Anti-PBRM1 Antibody Titration: 0.2-1 μ g/ml

ELISA Titer: 1:1562500

Positive Control: HepG2 cell lysate

PBRM1 is supported by BioGPS gene expression data to be expressed in HepG2



Host: Rabbit

Target Name: NOP56

Sample Tissue: Human Fetal Brain

Antibody Dilution: 1.0 μ g/ml

PBRM1 antibody - middle region - References

Xia,W., (2008) Cancer Res. 68 (6), 1667-1674 Reconstitution and Storage:For short term use, store at 2-8C up to 1 week. For long term storage, store at -20C in small aliquots to prevent freeze-thaw cycles.