

SETBP1 antibody - middle region
Rabbit Polyclonal Antibody
Catalog # AI11505

Specification

SETBP1 antibody - middle region - Product Information

Application	WB
Primary Accession	O9Y6X0
Other Accession	NM_015559 , NP_056374
Reactivity	Human, Mouse, Rabbit, Pig, Horse, Bovine
Predicted	Mouse, Rat, Rabbit, Pig, Horse, Bovine
Host	Rabbit
Clonality	Polyclonal
Calculated MW	170kDa KDa

SETBP1 antibody - middle region - Additional Information

Gene ID 26040

Alias Symbol KIAA0437, SEB

Other Names
SET-binding protein, SEB, SETBP1, KIAA0437

Format

Liquid. Purified antibody supplied in 1x PBS buffer with 0.09% (w/v) sodium azide and 2% sucrose.

Reconstitution & Storage

Add 50 ul of distilled water. Final anti-SETBP1 antibody concentration is 1 mg/ml in PBS buffer with 2% sucrose. For longer periods of storage, store at 20°C. Avoid repeat freeze-thaw cycles.

Precautions

SETBP1 antibody - middle region is for research use only and not for use in diagnostic or therapeutic procedures.

SETBP1 antibody - middle region - Protein Information

Name SETBP1

Synonyms KIAA0437

Cellular Location

Nucleus.

Tissue Location

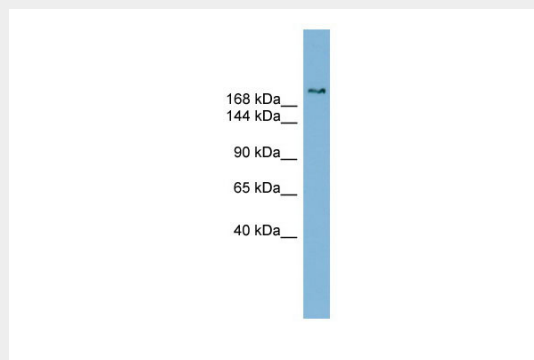
Expressed in numerous tissues. Expressed at low levels in myeloid and monocytic cells as well as in CD34+ cells; expression levels are higher in myeloid malignancies

SETBP1 antibody - middle region - Protocols

Provided below are standard protocols that you may find useful for product applications.

- [Western Blot](#)
- [Blocking Peptides](#)
- [Dot Blot](#)
- [Immunohistochemistry](#)
- [Immunofluorescence](#)
- [Immunoprecipitation](#)
- [Flow Cytometry](#)
- [Cell Culture](#)

SETBP1 antibody - middle region - Images



WB Suggested Anti-SETBP1 Antibody Titration: 0.2-1 µg/ml

ELISA Titer: 1:1562500

Positive Control: Human Stomach

SETBP1 antibody - middle region - References

Ott, M.G., (2006) Nat. Med. 12 (4), 401-409 Reconstitution and Storage: For short term use, store at 2-8°C up to 1 week. For long term storage, store at -20°C in small aliquots to prevent freeze-thaw cycles.