

BTBD3 antibody - C-terminal region
Rabbit Polyclonal Antibody
Catalog # AI11502**Specification**

BTBD3 antibody - C-terminal region - Product Information

Application	WB
Primary Accession	O9Y2F9
Other Accession	NM_014962 , NP_055777
Reactivity	Human, Mouse, Rat, Rabbit, Zebrafish, Pig, Horse, Bovine, Dog
Predicted	Human, Mouse, Rat, Rabbit, Zebrafish, Pig, Chicken, Bovine
Host	Rabbit
Clonality	Polyclonal
Calculated MW	58kDa KDa

BTBD3 antibody - C-terminal region - Additional Information**Gene ID** 22903**Alias Symbol** [dj742J24.1](#)**Other Names**

BTB/POZ domain-containing protein 3, BTBD3, KIAA0952

Format

Liquid. Purified antibody supplied in 1x PBS buffer with 0.09% (w/v) sodium azide and 2% sucrose.

Reconstitution & Storage

Add 100 ul of distilled water. Final anti-BTBD3 antibody concentration is 1 mg/ml in PBS buffer with 2% sucrose. For longer periods of storage, store at 20°C. Avoid repeat freeze-thaw cycles.

Precautions

BTBD3 antibody - C-terminal region is for research use only and not for use in diagnostic or therapeutic procedures.

BTBD3 antibody - C-terminal region - Protein Information**Name** BTBD3**Synonyms** KIAA0952**Function**

Acts as a key regulator of dendritic field orientation during development of sensory cortex. Also directs dendrites toward active axon terminals when ectopically expressed (By similarity).

Cellular Location

Cytoplasm, cytosol. Nucleus. Note=Translocates from the cytosol to the nucleus in response to

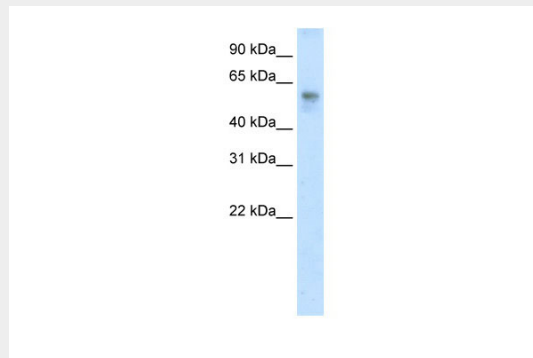
neuronal activity.

BTBD3 antibody - C-terminal region - Protocols

Provided below are standard protocols that you may find useful for product applications.

- [Western Blot](#)
- [Blocking Peptides](#)
- [Dot Blot](#)
- [Immunohistochemistry](#)
- [Immunofluorescence](#)
- [Immunoprecipitation](#)
- [Flow Cytometry](#)
- [Cell Culture](#)

BTBD3 antibody - C-terminal region - Images



WB Suggested Anti-BTBD3 Antibody Titration: 2.5µg/ml
ELISA Titer: 1:1562500
Positive Control: Human Placenta

BTBD3 antibody - C-terminal region - References

Ota,T., (2004) Nat. Genet. 36 (1), 40-45
Reconstitution and Storage: For short term use, store at 2-8C up to 1 week. For long term storage, store at -20C in small aliquots to prevent freeze-thaw cycles.