

PATZ1 antibody - middle region
Rabbit Polyclonal Antibody
Catalog # AI11491

Specification

PATZ1 antibody - middle region - Product Information

Application	IHC, WB
Primary Accession	O9HBE1
Other Accession	NM_014323 , NP_055138
Reactivity	Human, Mouse, Rat, Rabbit, Zebrafish, Pig, Horse, Bovine, Dog
Predicted	Human, Mouse, Rabbit, Pig, Chicken, Horse, Bovine, Dog
Host	Rabbit
Clonality	Polyclonal
Calculated MW	74kDa KDa

PATZ1 antibody - middle region - Additional Information

Gene ID 23598

Alias Symbol MAZR, PATZ, RIAZ, ZBTB19, ZNF278, ZSG, dj400N23

Other Names

POZ-, AT hook-, and zinc finger-containing protein 1, BTB/POZ domain zinc finger transcription factor, Protein kinase A RI subunit alpha-associated protein, Zinc finger and BTB domain-containing protein 19, Zinc finger protein 278, Zinc finger sarcoma gene protein, PATZ1, PATZ, RIAZ, ZBTB19, ZNF278, ZSG

Format

Liquid. Purified antibody supplied in 1x PBS buffer with 0.09% (w/v) sodium azide and 2% sucrose.

Reconstitution & Storage

Add 50 ul of distilled water. Final anti-PATZ1 antibody concentration is 1 mg/ml in PBS buffer with 2% sucrose. For longer periods of storage, store at 20°C. Avoid repeat freeze-thaw cycles.

Precautions

PATZ1 antibody - middle region is for research use only and not for use in diagnostic or therapeutic procedures.

PATZ1 antibody - middle region - Protein Information

Name PATZ1

Synonyms PATZ, RIAZ, ZBTB19, ZNF278, ZSG

Function

Transcriptional regulator that plays a role in many biological processes such as embryogenesis,

senescence, T-cell development or neurogenesis (PubMed:10713105, PubMed:25755280, PubMed:31875552). Interacts with the TP53 protein to control genes that are important in proliferation and in the DNA-damage response. Mechanistically, the interaction inhibits the DNA binding and transcriptional activity of TP53/p53 (PubMed:25755280). Part of the transcriptional network modulating regulatory T-cell development and controls the generation of the regulatory T-cell pool under homeostatic conditions (PubMed:31875552).

Cellular Location

Nucleus.

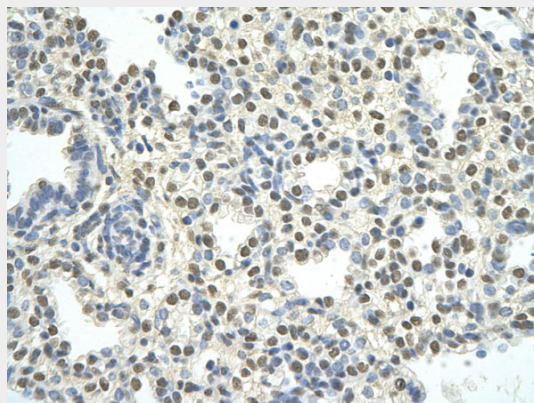
Tissue Location

Ubiquitous.

PATZ1 antibody - middle region - Protocols

Provided below are standard protocols that you may find useful for product applications.

- [Western Blot](#)
- [Blocking Peptides](#)
- [Dot Blot](#)
- [Immunohistochemistry](#)
- [Immunofluorescence](#)
- [Immunoprecipitation](#)
- [Flow Cytometry](#)
- [Cell Culture](#)

PATZ1 antibody - middle region - Images

Rabbit Anti-PATZ1 antibody
Paraffin Embedded Tissue: Human Lung cell
Cellular Data: alveolar cell
Antibody Concentration: 4.0-8.0 µg/ml
Magnification: 400X



90 kDa_
65 kDa_
40 kDa_
31 kDa_
22 kDa_

WB Suggested Anti-PATZ1 Antibody Titration: 0.2-1 μ g/ml

ELISA Titer: 1:1562500

Positive Control: HepG2 cell lysate

PATZ1 is strongly supported by BioGPS gene expression data to be expressed in Human HepG2 cells

PATZ1 antibody - middle region - References

Fedele, M., (2008) J. Pathol. 215 (1), 39-47 Reconstitution and Storage: For short term use, store at 2-8C up to 1 week. For long term storage, store at -20C in small aliquots to prevent freeze-thaw cycles.