

**NFATC1 antibody - N-terminal region**  
**Rabbit Polyclonal Antibody**  
**Catalog # AI11455****Specification**

---

**NFATC1 antibody - N-terminal region - Product Information**

Application	IHC, WB
Primary Accession	<a href="#">Q2M1S3</a>
Other Accession	<a href="#">NM_172390</a> , <a href="#">NP_765978</a>
Reactivity	Human, Mouse, Rat
Predicted	Human
Host	Rabbit
Clonality	Polyclonal
Calculated MW	78kDa KDa

**NFATC1 antibody - N-terminal region - Additional Information**

Alias Symbol **MGC138448, NF-ATC, NFAT2, NFATc**  
**Format**

Liquid. Purified antibody supplied in 1x PBS buffer with 0.09% (w/v) sodium azide and 2% sucrose.

**Reconstitution & Storage**

Add 50 ul of distilled water. Final anti-NFATC1 antibody concentration is 1 mg/ml in PBS buffer with 2% sucrose. For longer periods of storage, store at 20°C. Avoid repeat freeze-thaw cycles.

**Precautions**

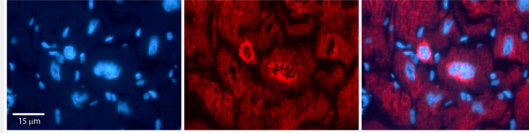
NFATC1 antibody - N-terminal region is for research use only and not for use in diagnostic or therapeutic procedures.

**NFATC1 antibody - N-terminal region - Protein Information****NFATC1 antibody - N-terminal region - Protocols**

Provided below are standard protocols that you may find useful for product applications.

- [Western Blot](#)
- [Blocking Peptides](#)
- [Dot Blot](#)
- [Immunohistochemistry](#)
- [Immunofluorescence](#)
- [Immunoprecipitation](#)
- [Flow Cytometry](#)
- [Cell Culture](#)

**NFATC1 antibody - N-terminal region - Images**  

**Rabbit Anti-NFATC1 Antibody**

Catalog Number: AI11455

Formalin Fixed Paraffin Embedded Tissue: Human Adult heart Observed Staining: Cytoplasmic,Nuclear (nuclear membrane)

Primary Antibody

Concentration: 1:600

Secondary Antibody: Donkey anti-Rabbit-Cy2/3

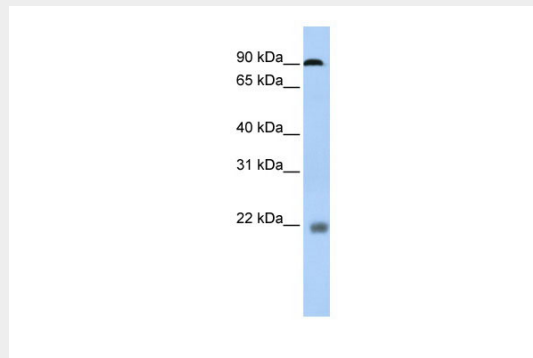
Secondary Antibody

Concentration: 1:200

Magnification: 20X

Exposure Time: 0.5 – 2.0 sec

Protocol located in Reviews and Data.



WB Suggested Anti-NFATC1 Antibody Titration: 0.2-1 µg/ml

ELISA Titer: 1:312500

Positive Control: Human Placenta

**NFATC1 antibody - N-terminal region - References**

Crotti,T.N., (2008) J. Cell. Physiol. 215 (3), 636-644 Reconstitution and Storage:For short term use, store at 2-8C up to 1 week. For long term storage, store at -20C in small aliquots to prevent freeze-thaw cycles.