

LASS5 antibody - N-terminal region
Rabbit Polyclonal Antibody
Catalog # AI11312**Specification**

LASS5 antibody - N-terminal region - Product Information

| | |
|-------------------|---|
| Application | WB |
| Primary Accession | Q8N5B7 |
| Other Accession | NM_147190 , NP_671723 |
| Reactivity | Human, Rat, Rabbit, Horse, Bovine, Dog |
| Predicted | Horse |
| Host | Rabbit |
| Clonality | Polyclonal |
| Calculated MW | 46kDa KDa |

LASS5 antibody - N-terminal region - Additional Information**Gene ID** 91012**Alias Symbol** CerS5, FLJ25304, MGC45411, Trh4, LASS5**Other Names**

Ceramide synthase 5, CerS5, 2.3.1.24, LAG1 longevity assurance homolog 5, CERS5, LASS5

Format

Liquid. Purified antibody supplied in 1x PBS buffer with 0.09% (w/v) sodium azide and 2% sucrose.

Reconstitution & Storage

Add 50 ul of distilled water. Final anti-LASS5 antibody concentration is 1 mg/ml in PBS buffer with 2% sucrose. For longer periods of storage, store at 20°C. Avoid repeat freeze-thaw cycles.

Precautions

LASS5 antibody - N-terminal region is for research use only and not for use in diagnostic or therapeutic procedures.

LASS5 antibody - N-terminal region - Protein Information**Name** CERS5 ([HGNC:23749](#))**Function**

Ceramide synthase that catalyzes the transfer of the acyl chain from acyl-CoA to a sphingoid base, with high selectivity toward palmitoyl-CoA (hexadecanoyl-CoA; C16:0-CoA) (PubMed:16951403, PubMed:18541923, PubMed:22144673, PubMed:22661289, PubMed:23530041, PubMed:26887952, PubMed:29632068, PubMed:31916624). Can use other acyl donors, but with less efficiency (By similarity). N-acylates sphinganine and sphingosine bases to form dihydroceramides and ceramides in de novo synthesis and salvage pathways, respectively (PubMed:31916624). Plays a role in de novo ceramide synthesis and surfactant homeostasis in pulmonary epithelia (By similarity).

Cellular Location

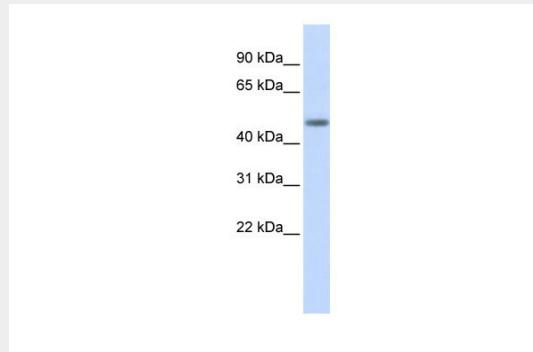
Endoplasmic reticulum membrane {ECO:0000250|UniProtKB:Q9D6K9}; Multi-pass membrane protein

LASS5 antibody - N-terminal region - Protocols

Provided below are standard protocols that you may find useful for product applications.

- [Western Blot](#)
- [Blocking Peptides](#)
- [Dot Blot](#)
- [Immunohistochemistry](#)
- [Immunofluorescence](#)
- [Immunoprecipitation](#)
- [Flow Cytometry](#)
- [Cell Culture](#)

LASS5 antibody - N-terminal region - Images



WB Suggested Anti-LASS5 Antibody Titration: 0.2-1 µg/ml

ELISA Titer: 1:62500

Positive Control: Human Pancreas

LASS5 antibody - N-terminal region - References

Kitatani, K., (2006) J. Biol. Chem. 281 (48), 36793-36802 Reconstitution and Storage: For short term use, store at 2-8C up to 1 week. For long term storage, store at -20C in small aliquots to prevent freeze-thaw cycles.