

**Nkx1-2 antibody - middle region**  
**Rabbit Polyclonal Antibody**  
**Catalog # AI11082****Specification**

---

**Nkx1-2 antibody - middle region - Product Information**

Application	<b>WB</b>
Primary Accession	<a href="#">P42580</a>
Other Accession	<a href="#">NM_009123</a> , <a href="#">NP_033149</a>
Reactivity	<b>Mouse, Rat, Pig</b>
Predicted	<b>Rat</b>
Host	<b>Rabbit</b>
Clonality	<b>Polyclonal</b>
Calculated MW	<b>32kDa KDa</b>

**Nkx1-2 antibody - middle region - Additional Information****Gene ID** 20231**Alias Symbol** **Nkx-1.1, Nkx-1.2, Sax1****Other Names**

NK1 transcription factor-related protein 2, Homeobox protein SAX-1, NKX-1.1, Nkx1-2, Nkx1.1, Sax1

**Format**

Liquid. Purified antibody supplied in 1x PBS buffer with 0.09% (w/v) sodium azide and 2% sucrose.

**Reconstitution & Storage**

Add 50 ul of distilled water. Final anti-Nkx1-2 antibody concentration is 1 mg/ml in PBS buffer with 2% sucrose. For longer periods of storage, store at 20°C. Avoid repeat freeze-thaw cycles.

**Precautions**

Nkx1-2 antibody - middle region is for research use only and not for use in diagnostic or therapeutic procedures.

**Nkx1-2 antibody - middle region - Protein Information****Name** Nkx1-2**Synonyms** Nkx1.1, Sax1**Function**

May function in cell specification, particularly in the CNS.

**Cellular Location**

Nucleus.

**Tissue Location**

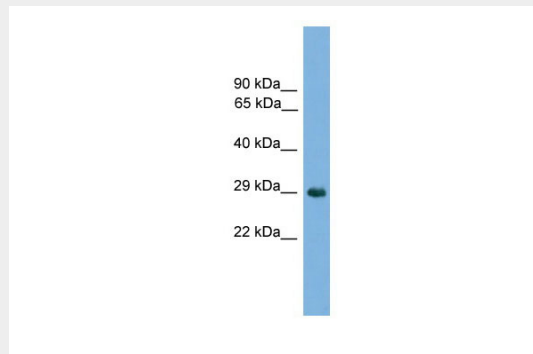
Expression detected in adult brain, testis and spleen. In the testis, expressed in the germ cells of the seminiferous epithelium, in elongating spermatids and in spermatozoa. Expressed throughout the brain with highest levels in regions of the cerebral cortex, hippocampus, diencephalon, pons, medulla and cerebellum. In the embryo, expressed in the developing posterior central nervous system First seen in the ectoderm lateral to the primitive streak, later it encompasses the neural plate. Starting at day 9.5 pc, expressed in distinct areas of spinal cord, hindbrain, midbrain and forebrain

### **Nkx1-2 antibody - middle region - Protocols**

Provided below are standard protocols that you may find useful for product applications.

- [Western Blot](#)
- [Blocking Peptides](#)
- [Dot Blot](#)
- [Immunohistochemistry](#)
- [Immunofluorescence](#)
- [Immunoprecipitation](#)
- [Flow Cytometry](#)
- [Cell Culture](#)

### **Nkx1-2 antibody - middle region - Images**



WB Suggested Anti-Nkx1-2 Antibody Titration: 0.2-1 µg/ml  
ELISA Titer: 1:1562500  
Positive Control: Mouse Lung