

TRPM3 antibody - N-terminal region
Rabbit Polyclonal Antibody
Catalog # AI11027**Specification**

TRPM3 antibody - N-terminal region - Product Information

Application	WB
Primary Accession	Q5T8N8
Other Accession	NM_206948 , NP_996831
Reactivity	Human, Mouse, Rat, Rabbit, Zebrafish, Horse, Bovine, Dog
Predicted	Human, Mouse, Rat, Rabbit, Zebrafish, Pig, Chicken, Bovine
Host	Rabbit
Clonality	Polyclonal
Calculated MW	25kDa KDa

TRPM3 antibody - N-terminal region - Additional Information

Alias Symbol **GON-2, MLSN2, LTRPC3**

Format

Liquid. Purified antibody supplied in 1x PBS buffer with 0.09% (w/v) sodium azide and 2% sucrose.

Reconstitution & Storage

Add 50 ul of distilled water. Final anti-TRPM3 antibody concentration is 1 mg/ml in PBS buffer with 2% sucrose. For longer periods of storage, store at 20°C. Avoid repeat freeze-thaw cycles.

Precautions

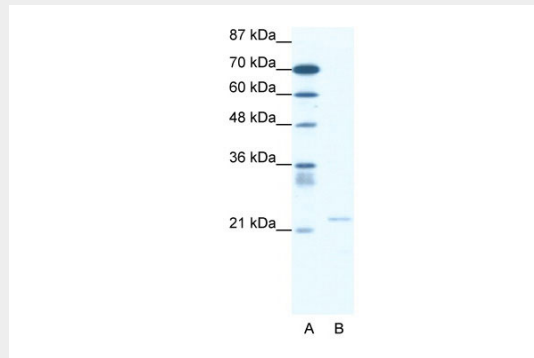
TRPM3 antibody - N-terminal region is for research use only and not for use in diagnostic or therapeutic procedures.

TRPM3 antibody - N-terminal region - Protein Information**TRPM3 antibody - N-terminal region - Protocols**

Provided below are standard protocols that you may find useful for product applications.

- [Western Blot](#)
- [Blocking Peptides](#)
- [Dot Blot](#)
- [Immunohistochemistry](#)
- [Immunofluorescence](#)
- [Immunoprecipitation](#)
- [Flow Cytometry](#)
- [Cell Culture](#)

TRPM3 antibody - N-terminal region - Images



WB Suggested Anti-TRPM3 Antibody Titration: 0.2-1 $\mu\text{g/ml}$
ELISA Titer: 1:1562500
Positive Control: Jurkat cell lysate

TRPM3 antibody - N-terminal region - References

Oberwinkler, J., et al., (2005) J. Biol. Chem. 280 (23), 22540-22548
Reconstitution and Storage: For short term use, store at 2-8C up to 1 week. For long term storage, store at -20C in small aliquots to prevent freeze-thaw cycles.