

GJA5 antibody - N-terminal region
Rabbit Polyclonal Antibody
Catalog # AI11006

Specification

GJA5 antibody - N-terminal region - Product Information

Application	WB
Primary Accession	P36382
Other Accession	NM_005266 , NP_005257
Reactivity	Human, Rat, Rabbit, Pig, Horse, Bovine, Dog
Predicted Host	Human, Horse, Bovine, Dog
Clonality	Rabbit
Calculated MW	Polyclonal 39kDa KDa

GJA5 antibody - N-terminal region - Additional Information

Gene ID 2702

Alias Symbol CX40, ATFB11
Other Names
Gap junction alpha-5 protein, Connexin-40, Cx40, GJA5

Format

Liquid. Purified antibody supplied in 1x PBS buffer with 0.09% (w/v) sodium azide and 2% sucrose.

Reconstitution & Storage

Add 50 ul of distilled water. Final anti-GJA5 antibody concentration is 1 mg/ml in PBS buffer with 2% sucrose. For longer periods of storage, store at 20°C. Avoid repeat freeze-thaw cycles.

Precautions

GJA5 antibody - N-terminal region is for research use only and not for use in diagnostic or therapeutic procedures.

GJA5 antibody - N-terminal region - Protein Information

Name GJA5

Function

One gap junction consists of a cluster of closely packed pairs of transmembrane channels, the connexons, through which materials of low MW diffuse from one cell to a neighboring cell.

Cellular Location

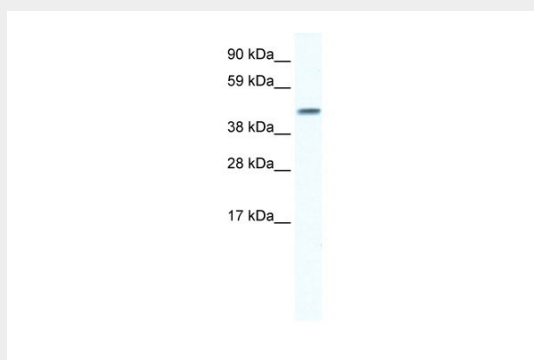
Cell membrane; Multi-pass membrane protein. Cell junction, gap junction

GJA5 antibody - N-terminal region - Protocols

Provided below are standard protocols that you may find useful for product applications.

- [Western Blot](#)
- [Blocking Peptides](#)
- [Dot Blot](#)
- [Immunohistochemistry](#)
- [Immunofluorescence](#)
- [Immunoprecipitation](#)
- [Flow Cytometry](#)
- [Cell Culture](#)

GJA5 antibody - N-terminal region - Images



WB Suggested Anti-GJA5 Antibody Titration: 0.2-1 μ g/ml

ELISA Titer: 1:312500

Positive Control: Human Lung

GJA5 antibody - N-terminal region - References

Makita, N., et al., (2005) Acta Neurochir. Suppl. 2 (10), 1128-1134
Reconstitution and Storage: For short term use, store at 2-8C up to 1 week. For long term storage, store at -20C in small aliquots to prevent freeze-thaw cycles.