

**NMUR2 antibody - N-terminal region**  
**Rabbit Polyclonal Antibody**  
**Catalog # AI10816****Specification**

---

**NMUR2 antibody - N-terminal region - Product Information**

Application	<b>WB</b>
Primary Accession	<a href="#">O9GZQ4</a>
Other Accession	<a href="#">NM_020167</a> , <a href="#">NP_064552</a>
Reactivity	<b>Human</b>
Predicted	<b>Human</b>
Host	<b>Rabbit</b>
Clonality	<b>Polyclonal</b>
Calculated MW	<b>46kDa KDa</b>

**NMUR2 antibody - N-terminal region - Additional Information****Gene ID** 56923**Alias Symbol** **FM4, FM-4, TGR1, NMU2R, TGR-1, NMU-R2****Other Names**

Neuromedin-U receptor 2, NMU-R2, G-protein coupled receptor FM-4, G-protein coupled receptor TGR-1, NMUR2, NMU2R, TGR1

**Format**

Liquid. Purified antibody supplied in 1x PBS buffer with 0.09% (w/v) sodium azide and 2% sucrose.

**Reconstitution & Storage**

Add 100 ul of distilled water. Final anti-NMUR2 antibody concentration is 1 mg/ml in PBS buffer with 2% sucrose. For longer periods of storage, store at 20°C. Avoid repeat freeze-thaw cycles.

**Precautions**

NMUR2 antibody - N-terminal region is for research use only and not for use in diagnostic or therapeutic procedures.

**NMUR2 antibody - N-terminal region - Protein Information****Name** NMUR2**Synonyms** NMU2R, TGR1**Function**

Receptor for the neuromedin-U and neuromedin-S neuropeptides.

**Cellular Location**

Cell membrane; Multi-pass membrane protein.

**Tissue Location**

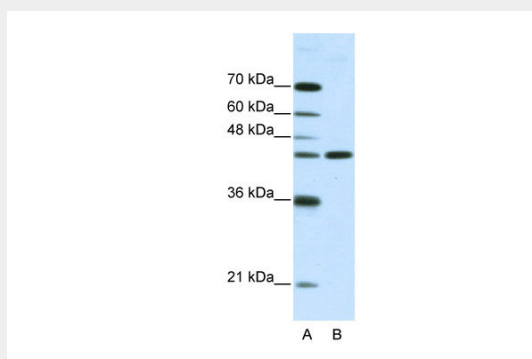
Predominantly expressed in the CNS, particularly in the medulla oblongata, pontine reticular formation, spinal cord, and thalamus. High level in testis whereas lower levels are present in a variety of peripheral tissues including the gastrointestinal tract, genitourinary tract, liver, pancreas, adrenal gland, thyroid gland, lung, trachea, spleen and thymus.

### **NMUR2 antibody - N-terminal region - Protocols**

Provided below are standard protocols that you may find useful for product applications.

- [Western Blot](#)
- [Blocking Peptides](#)
- [Dot Blot](#)
- [Immunohistochemistry](#)
- [Immunofluorescence](#)
- [Immunoprecipitation](#)
- [Flow Cytometry](#)
- [Cell Culture](#)

### **NMUR2 antibody - N-terminal region - Images**



WB Suggested Anti-NMUR2 Antibody Titration: 2.5 µg/ml  
Positive Control: HepG2 Whole Cell

### **NMUR2 antibody - N-terminal region - References**

Fernandez (2002) Peptides 23 (9), 1617-1623  
Reconstitution and Storage: For short term use, store at 2-8C up to 1 week. For long term storage, store at -20C in small aliquots to prevent freeze-thaw cycles.