

Trpv6 antibody - middle region
Rabbit Polyclonal Antibody
Catalog # AI10813**Specification**

Trpv6 antibody - middle region - Product Information

Application	IHC, WB
Primary Accession	O9R186
Other Accession	NM_053686 , NP_446138
Reactivity	Human, Mouse, Rat, Rabbit, Horse, Dog
Predicted	Human, Mouse, Rat, Rabbit, Pig
Host	Rabbit
Clonality	Polyclonal
Calculated MW	83kDa KDa

Trpv6 antibody - middle region - Additional Information**Gene ID** 114246**Alias Symbol** CaT1, Ecac2, Otrpc3**Other Names**

Transient receptor potential cation channel subfamily V member 6, TrpV6, Calcium transport protein 1, CaT1, Epithelial calcium channel 2, ECaC2, Trpv6

Format

Liquid. Purified antibody supplied in 1x PBS buffer with 0.09% (w/v) sodium azide and 2% sucrose.

Reconstitution & Storage

Add 50 ul of distilled water. Final anti-Trpv6 antibody concentration is 1 mg/ml in PBS buffer with 2% sucrose. For longer periods of storage, store at 20°C. Avoid repeat freeze-thaw cycles.

Precautions

Trpv6 antibody - middle region is for research use only and not for use in diagnostic or therapeutic procedures.

Trpv6 antibody - middle region - Protein Information**Name** Trpv6**Function**Calcium selective cation channel that mediates Ca(2+) uptake in various tissues, including the intestine (PubMed: [10428857](http://www.uniprot.org/citations/10428857) target="_blank">10428857, PubMed: [11287959](http://www.uniprot.org/citations/11287959) target="_blank">11287959, PubMed: [27296226](http://www.uniprot.org/citations/27296226) target="_blank">27296226, PubMed: [28878326](http://www.uniprot.org/citations/28878326) target="_blank">28878326). Important for normal Ca(2+) ion homeostasis in the body, including bone and skin (By similarity). The channel is activated by low internal calcium level, probably including intracellular calcium store depletion, and the current exhibits an inward

rectification (PubMed:10428857, PubMed:11287959, PubMed:27296226). Inactivation includes both a rapid Ca(2+)-dependent and a slower Ca(2+)-calmodulin-dependent mechanism; the latter may be regulated by phosphorylation. In vitro, is slowly inhibited by Mg(2+) in a voltage-independent manner. Heteromeric assembly with TRPV5 seems to modify channel properties. TRPV5-TRPV6 heteromultimeric concatemers exhibit voltage-dependent gating (By similarity).

Cellular Location

Cell membrane; Multi-pass membrane protein

Tissue Location

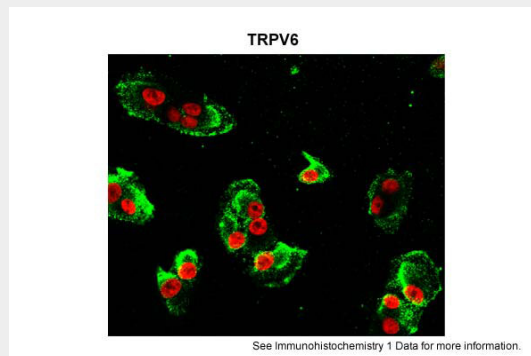
Expressed in duodenum, proximal jejunum, cecum, and colon.

Trpv6 antibody - middle region - Protocols

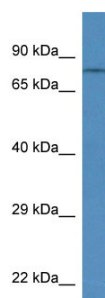
Provided below are standard protocols that you may find useful for product applications.

- [Western Blot](#)
- [Blocking Peptides](#)
- [Dot Blot](#)
- [Immunohistochemistry](#)
- [Immunofluorescence](#)
- [Immunoprecipitation](#)
- [Flow Cytometry](#)
- [Cell Culture](#)

Trpv6 antibody - middle region - Images



Sample Type: hRetinal pigment epithelial cells Green: primary Red: nuclear Primary Dilution: 1:200
Secondary Antibody: goat anti-rabbit-Alexa 488 Secondary Dilution: 1:500 Image
Submitted by: Brian Kennedy Indiana University Northwest See Customer Feedback tab for detailed information.



Trpv6 antibody - middle region (AI10813) validated by WB using Rat Brain lysate at 1µg/ml.