

**CLIC1 antibody - N-terminal region**  
**Rabbit Polyclonal Antibody**  
**Catalog # AI10778****Specification**

---

**CLIC1 antibody - N-terminal region - Product Information**

Application	IHC, WB
Primary Accession	<a href="#">Q502X1</a>
Other Accession	<a href="#">NM_001288</a> , <a href="#">NP_001279</a>
Reactivity	Human, Mouse, Rat, Rabbit, Zebrafish, Goat, Horse, Bovine, Dog
Predicted	Human, Mouse, Rat, Rabbit, Zebrafish, Pig, Goat, Bovine
Host	Rabbit
Clonality	Polyclonal
Calculated MW	27kDa KDa

**CLIC1 antibody - N-terminal region - Additional Information**

Alias Symbol **G6, NCC27**

**Format**

Liquid. Purified antibody supplied in 1x PBS buffer with 0.09% (w/v) sodium azide and 2% sucrose.

**Reconstitution & Storage**

Add 100 ul of distilled water. Final anti-CLIC1 antibody concentration is 1 mg/ml in PBS buffer with 2% sucrose. For longer periods of storage, store at 20°C. Avoid repeat freeze-thaw cycles.

**Precautions**

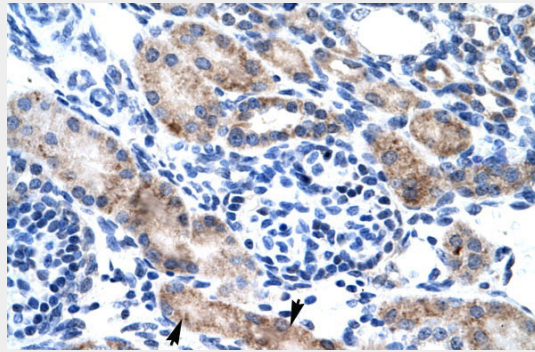
CLIC1 antibody - N-terminal region is for research use only and not for use in diagnostic or therapeutic procedures.

**CLIC1 antibody - N-terminal region - Protein Information****CLIC1 antibody - N-terminal region - Protocols**

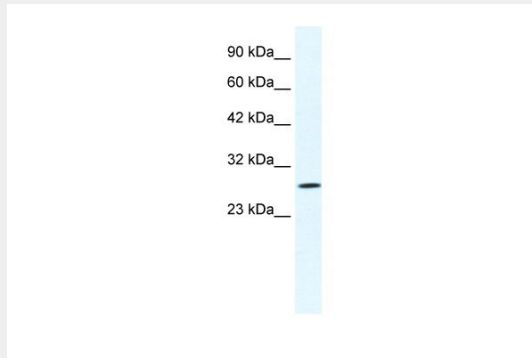
Provided below are standard protocols that you may find useful for product applications.

- [Western Blot](#)
- [Blocking Peptides](#)
- [Dot Blot](#)
- [Immunohistochemistry](#)
- [Immunofluorescence](#)
- [Immunoprecipitation](#)
- [Flow Cytometry](#)
- [Cell Culture](#)

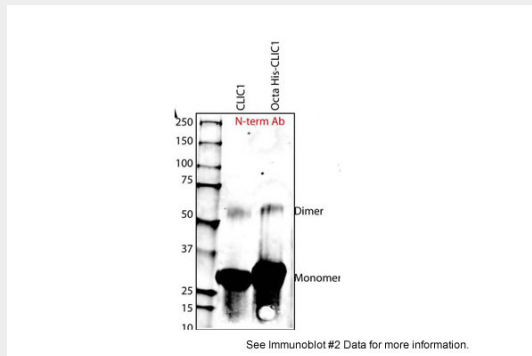
**CLIC1 antibody - N-terminal region - Images**



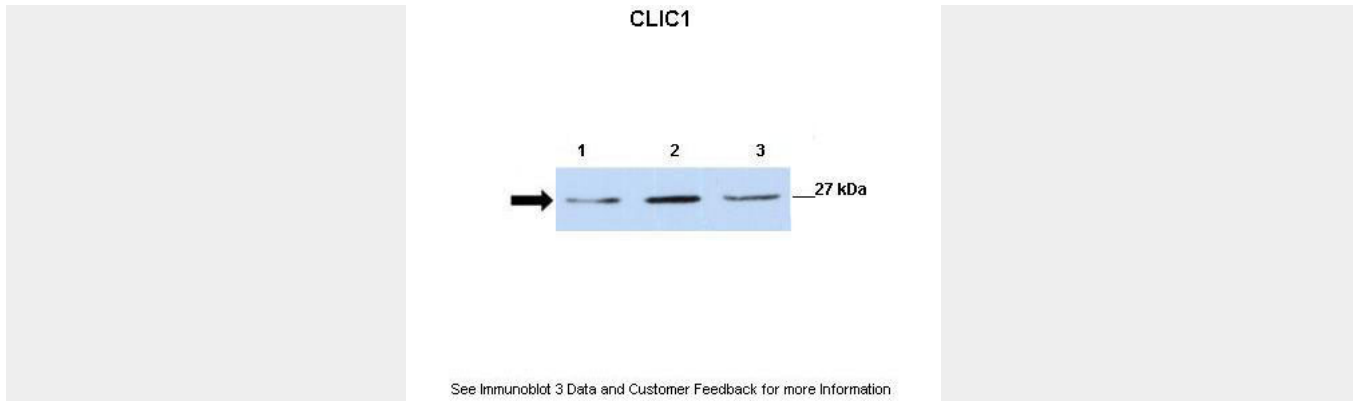
Human kidney



WB Suggested Anti-CLIC1 Antibody Titration: 1.25µg/ml  
ELISA Titer: 1:312500  
Positive Control: Jurkat cell lysate



Sample Type: Purified Recombinant CLIC-1 Protein Primary Dilution: 1:1000  
Submitted by: Harpreet Singh, University of California Los Angeles



Lanes: Lane 1: 30ug mouse renal epithelial lysate Lane 2: 30ug mouse renal epithelial lysate  
Lane 3: 30ug mouse renal epithelial lysate  
Primary Antibody Dilution: 1:500  
Secondary Antibody: Anti-rabbit-HRP  
Secondary Antibody Dilution: 1:2500  
Gene Name: CLIC1  
Submitted by: Dr. JUNMING FAN,ECU

#### **CLIC1 antibody - N-terminal region - References**

Novarino,G., et al., (2004) J. Neurosci. 24 (23), 5322-5330  
Reconstitution and Storage:For short term use, store at 2-8C up to 1 week. For long term storage, store at -20C in small aliquots to prevent freeze-thaw cycles.  
Publications:Yang, J.-Y. et al. Chloride intracellular channel 1 regulates osteoblast differentiation. Bone 45, 1175-85 (2009). WB, Rat, Dog, H, Goat, Rabbit, Guinea pig, Human, Mouse, Bovine, Zebrafish19703605