

CLIC1 antibody - C-terminal region
Rabbit Polyclonal Antibody
Catalog # AI10777**Specification**

CLIC1 antibody - C-terminal region - Product Information

Application	WB
Primary Accession	Q502X1
Other Accession	NM_001288 , NP_001279
Reactivity	Human, Mouse, Rat, Rabbit, Goat, Horse, Bovine, Dog
Predicted Host	Human, Mouse, Rat, Rabbit, Goat, Bovine
Clonality	Rabbit
Calculated MW	Polyclonal 27kDa KDa

CLIC1 antibody - C-terminal region - Additional InformationAlias Symbol **G6, NCC27****Format**

Liquid. Purified antibody supplied in 1x PBS buffer with 0.09% (w/v) sodium azide and 2% sucrose.

Reconstitution & Storage

Add 50 ul of distilled water. Final anti-CLIC1 antibody concentration is 1 mg/ml in PBS buffer with 2% sucrose. For longer periods of storage, store at 20°C. Avoid repeat freeze-thaw cycles.

Precautions

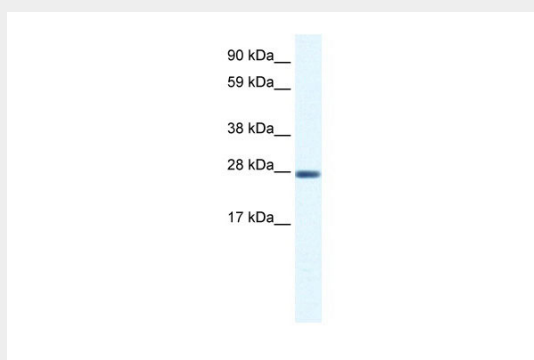
CLIC1 antibody - C-terminal region is for research use only and not for use in diagnostic or therapeutic procedures.

CLIC1 antibody - C-terminal region - Protein Information**CLIC1 antibody - C-terminal region - Protocols**

Provided below are standard protocols that you may find useful for product applications.

- [Western Blot](#)
- [Blocking Peptides](#)
- [Dot Blot](#)
- [Immunohistochemistry](#)
- [Immunofluorescence](#)
- [Immunoprecipitation](#)
- [Flow Cytometry](#)
- [Cell Culture](#)

CLIC1 antibody - C-terminal region - Images



WB Suggested Anti-CLIC1 Antibody Titration: 0.2-1 $\mu\text{g/ml}$

ELISA Titer: 1:312500

Positive Control: HepG2 cell lysate