

CACNB1 antibody - N-terminal region
Rabbit Polyclonal Antibody
Catalog # AI10763**Specification**

CACNB1 antibody - N-terminal region - Product Information

Application	WB
Primary Accession	Q02641
Other Accession	NM_000723 , NP_000714
Reactivity	Human, Mouse, Rat, Rabbit, Zebrafish, Pig, Horse, Bovine, Dog
Predicted Host	Human, Mouse, Rat, Zebrafish, Pig, Bovine
Clonality	Rabbit
Calculated MW	Polyclonal 66kDa KDa

CACNB1 antibody - N-terminal region - Additional Information**Gene ID 782**Alias Symbol **CAB1, CACNLB1, CCHLB1, MGC41896****Other Names**

Voltage-dependent L-type calcium channel subunit beta-1, CAB1, Calcium channel voltage-dependent subunit beta 1, CACNB1, CACNLB1

Format

Liquid. Purified antibody supplied in 1x PBS buffer with 0.09% (w/v) sodium azide and 2% sucrose.

Reconstitution & Storage

Add 50 ul of distilled water. Final anti-CACNB1 antibody concentration is 1 mg/ml in PBS buffer with 2% sucrose. For longer periods of storage, store at 20°C. Avoid repeat freeze-thaw cycles.

Precautions

CACNB1 antibody - N-terminal region is for research use only and not for use in diagnostic or therapeutic procedures.

CACNB1 antibody - N-terminal region - Protein Information**Name** CACNB1**Synonyms** CACNLB1**Function**Regulatory subunit of L-type calcium channels (PubMed: [1309651](http://www.uniprot.org/citations/1309651), PubMed: [15615847](http://www.uniprot.org/citations/15615847), PubMed: [8107964](http://www.uniprot.org/citations/8107964)). Regulates the activity of L-type calcium channels that contain CACNA1A as pore-forming subunit (By similarity).

Regulates the activity of L-type calcium channels that contain CACNA1C as pore-forming subunit and increases the presence of the channel complex at the cell membrane (PubMed:15615847). Required for functional expression L-type calcium channels that contain CACNA1D as pore-forming subunit (PubMed:1309651). Regulates the activity of L-type calcium channels that contain CACNA1B as pore-forming subunit (PubMed:8107964).

Cellular Location

Cell membrane, sarcolemma; Peripheral membrane protein {ECO:0000250|UniProtKB:P19517}; Cytoplasmic side {ECO:0000250|UniProtKB:P19517}. Cell membrane; Peripheral membrane protein

Tissue Location

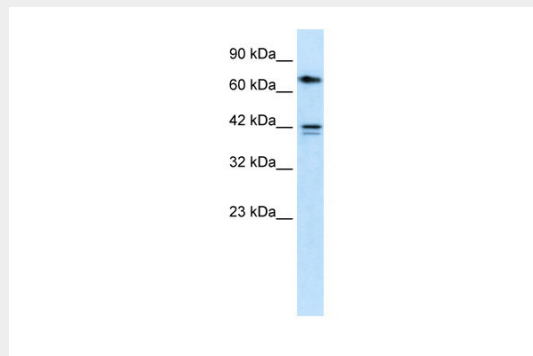
Detected in heart ventricle (at protein level) (PubMed:15615847). Isoform 1 and isoform 3 are expressed in brain, heart, spleen, central nervous system and neuroblastoma cells. Isoform 2 is expressed in skeletal muscle.

CACNB1 antibody - N-terminal region - Protocols

Provided below are standard protocols that you may find useful for product applications.

- [Western Blot](#)
- [Blocking Peptides](#)
- [Dot Blot](#)
- [Immunohistochemistry](#)
- [Immunofluorescence](#)
- [Immunoprecipitation](#)
- [Flow Cytometry](#)
- [Cell Culture](#)

CACNB1 antibody - N-terminal region - Images



WB Suggested Anti-CACNB1 Antibody Titration: 0.2-1 µg/ml
ELISA Titer: 1:62500
Positive Control: HepG2 cell lysate

CACNB1 antibody - N-terminal region - References

Hogan, K., et al., (1999) Neurosci. Lett. 277 (2), 111-114
Reconstitution and Storage: For short term use, store at 2-8C up to 1 week. For long term storage, store at -20C in small aliquots to prevent freeze-thaw cycles.