

**ZNF22 antibody - C-terminal region**  
**Rabbit Polyclonal Antibody**  
**Catalog # AI10739**

**Specification**

---

**ZNF22 antibody - C-terminal region - Product Information**

Application	WB
Primary Accession	<a href="#">P17026</a>
Other Accession	<a href="#">NM_006963</a> , <a href="#">NP_008894</a>
Reactivity	Human, Rabbit, Pig, Horse, Bovine, Dog
Predicted	Human, Bovine
Host	Rabbit
Clonality	Polyclonal
Calculated MW	26kDa KDa

**ZNF22 antibody - C-terminal region - Additional Information**

**Gene ID** 7570

**Alias Symbol** KOX15, HKR-T1, ZNF422, Zfp422

**Other Names**

Zinc finger protein 22, Zinc finger protein KOX15, Zinc finger protein Krox-26, ZNF22, KOX15, KROX26

**Format**

Liquid. Purified antibody supplied in 1x PBS buffer with 0.09% (w/v) sodium azide and 2% sucrose.

**Reconstitution & Storage**

Add 100 ul of distilled water. Final anti-ZNF22 antibody concentration is 1 mg/ml in PBS buffer with 2% sucrose. For longer periods of storage, store at 20°C. Avoid repeat freeze-thaw cycles.

**Precautions**

ZNF22 antibody - C-terminal region is for research use only and not for use in diagnostic or therapeutic procedures.

**ZNF22 antibody - C-terminal region - Protein Information**

**Name** ZNF22

**Synonyms** KOX15, KROX26

**Function**

Binds DNA through the consensus sequence 5'-CAATG-3'. May be involved in transcriptional regulation and may play a role in tooth formation (By similarity).

**Cellular Location**

Nucleus.

### Tissue Location

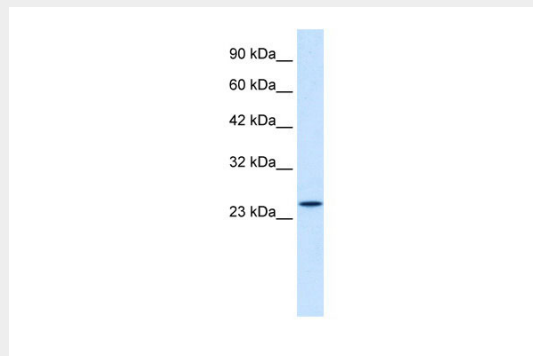
In the embryo, expressed in developing craniofacial structures including dental epithelium of maxillary molar tooth organs, tongue epithelium and muscle, and craniofacial bone osteoblasts. In the adult, expressed in mesoderm-derived tissues such as skeletal muscle, heart, kidney and liver. Intermediate expression in spleen, thymus and brain. Low levels in endoderm-derived tissues such as intestine and colon.

### ZNF22 antibody - C-terminal region - Protocols

Provided below are standard protocols that you may find useful for product applications.

- [Western Blot](#)
- [Blocking Peptides](#)
- [Dot Blot](#)
- [Immunohistochemistry](#)
- [Immunofluorescence](#)
- [Immunoprecipitation](#)
- [Flow Cytometry](#)
- [Cell Culture](#)

### ZNF22 antibody - C-terminal region - Images



WB Suggested Anti-ZNF22 Antibody Titration: 1.25 $\mu$ g/ml

ELISA Titer: 1:62500

Positive Control: Jurkat cell lysate

ZNF22 is strongly supported by BioGPS gene expression data to be expressed in Human Jurkat cells

### ZNF22 antibody - C-terminal region - References

Gao, Y., et al., (2003) J. Dent. Res. 82 (12), 1002-1007  
Reconstitution and Storage: For short term use, store at 2-8C up to 1 week. For long term storage, store at -20C in small aliquots to prevent freeze-thaw cycles.