

COLQ antibody - C-terminal region
Rabbit Polyclonal Antibody
Catalog # AI10733

Specification

COLQ antibody - C-terminal region - Product Information

Application	WB
Primary Accession	O9Y215
Other Accession	NM_080544 , NP_536805
Reactivity	Human
Predicted	Human
Host	Rabbit
Clonality	Polyclonal
Calculated MW	31kDa KDa

COLQ antibody - C-terminal region - Additional Information

Gene ID 8292

Alias Symbol **EAD, FLJ55041**

Other Names

Acetylcholinesterase collagenic tail peptide, AChE Q subunit, Acetylcholinesterase-associated collagen, COLQ

Format

Liquid. Purified antibody supplied in 1x PBS buffer with 0.09% (w/v) sodium azide and 2% sucrose.

Reconstitution & Storage

Add 50 ul of distilled water. Final anti-COLQ antibody concentration is 1 mg/ml in PBS buffer with 2% sucrose. For longer periods of storage, store at 20°C. Avoid repeat freeze-thaw cycles.

Precautions

COLQ antibody - C-terminal region is for research use only and not for use in diagnostic or therapeutic procedures.

COLQ antibody - C-terminal region - Protein Information

Name COLQ

Function

Anchors the catalytic subunits of asymmetric AChE to the synaptic basal lamina.

Cellular Location

Synapse.

Tissue Location

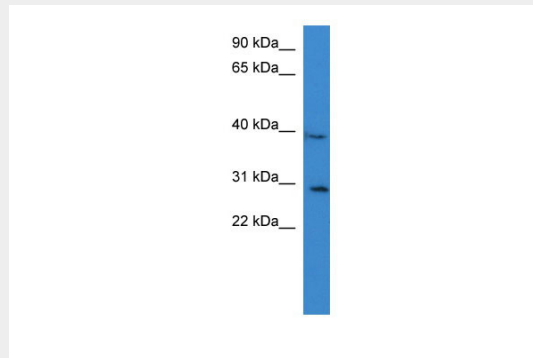
Found at the end plate of skeletal muscle.

COLQ antibody - C-terminal region - Protocols

Provided below are standard protocols that you may find useful for product applications.

- [Western Blot](#)
- [Blocking Peptides](#)
- [Dot Blot](#)
- [Immunohistochemistry](#)
- [Immunofluorescence](#)
- [Immunoprecipitation](#)
- [Flow Cytometry](#)
- [Cell Culture](#)

COLQ antibody - C-terminal region - Images



WB Suggested Anti-COLQ Antibody Titration: 0.2-1 μ g/ml

ELISA Titer: 1:312500

Positive Control: PANC1 cell lysate

COLQ is supported by BioGPS gene expression data to be expressed in PANC1