

RFX4 antibody - N-terminal region
Rabbit Polyclonal Antibody
Catalog # AI10732

Specification

RFX4 antibody - N-terminal region - Product Information

Application	WB
Primary Accession	O33E94
Other Accession	NM_213594 , NP_998759
Reactivity	Human, Mouse, Rat, Rabbit, Zebrafish, Pig, Horse, Bovine, Dog
Predicted	Human, Mouse, Rat, Rabbit, Pig, Horse, Bovine, Dog
Host	Rabbit
Clonality	Polyclonal
Calculated MW	83kDa KDa

RFX4 antibody - N-terminal region - Additional Information

Gene ID 5992

Alias Symbol **NYD-SP10**

Other Names

Transcription factor RFX4, Regulatory factor X 4, Testis development protein NYD-SP10, RFX4

Format

Liquid. Purified antibody supplied in 1x PBS buffer with 0.09% (w/v) sodium azide and 2% sucrose.

Reconstitution & Storage

Add 50 ul of distilled water. Final anti-RFX4 antibody concentration is 1 mg/ml in PBS buffer with 2% sucrose. For longer periods of storage, store at 20°C. Avoid repeat freeze-thaw cycles.

Precautions

RFX4 antibody - N-terminal region is for research use only and not for use in diagnostic or therapeutic procedures.

RFX4 antibody - N-terminal region - Protein Information

Name RFX4

Function

Transcription factor that plays a role in early brain development. May activate transcription by interacting directly with the X-box. May activate transcription from CX3CL1 promoter through the X-box during brain development. May be required for neural tube ciliogenesis during embryogenesis (By similarity).

Cellular Location

Nucleus {ECO:0000255|PROSITE-ProRule:PRU00858}.

Tissue Location

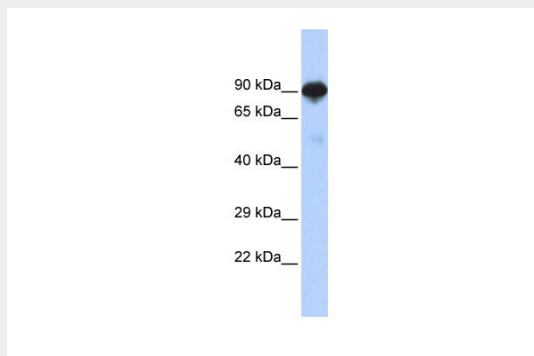
Isoform 1: Expressed in brain and gliomas (at protein level). Isoform 2: Testis-specific (at protein level). Isoform 3: Testis-specific (at protein level). Isoform 3: Expressed at a higher level in adult testes and ejaculated spermatozoa than in fetal testes Isoform 4: Testis-specific.

RFX4 antibody - N-terminal region - Protocols

Provided below are standard protocols that you may find useful for product applications.

- [Western Blot](#)
- [Blocking Peptides](#)
- [Dot Blot](#)
- [Immunohistochemistry](#)
- [Immunofluorescence](#)
- [Immunoprecipitation](#)
- [Flow Cytometry](#)
- [Cell Culture](#)

RFX4 antibody - N-terminal region - Images



WB Suggested Anti-RFX4 Antibody Titration: 0.2-1 μ g/ml
ELISA Titer: 1:312500
Positive Control: Human brain