

ONECUT3 antibody - C-terminal region
Rabbit Polyclonal Antibody
Catalog # AI10678**Specification**

ONECUT3 antibody - C-terminal region - Product Information

Application	WB
Primary Accession	O60422
Other Accession	XM_939730 , XP_944823
Reactivity	Human, Mouse, Rat, Pig, Bovine, Dog
Predicted	Pig, Bovine, Dog
Host	Rabbit
Clonality	Polyclonal
Calculated MW	54kDa KDa

ONECUT3 antibody - C-terminal region - Additional Information**Gene ID** 390874**Alias Symbol** **OC3****Other Names**

One cut domain family member 3, One cut homeobox 3, Transcription factor ONECUT-3, OC-3, ONECUT3

Format

Liquid. Purified antibody supplied in 1x PBS buffer with 0.09% (w/v) sodium azide and 2% sucrose.

Reconstitution & Storage

Add 100 ul of distilled water. Final anti-ONECUT3 antibody concentration is 1 mg/ml in PBS buffer with 2% sucrose. For longer periods of storage, store at 20°C. Avoid repeat freeze-thaw cycles.

Precautions

ONECUT3 antibody - C-terminal region is for research use only and not for use in diagnostic or therapeutic procedures.

ONECUT3 antibody - C-terminal region - Protein Information**Name** ONECUT3**Function**

Transcriptional activator. Binds the consensus DNA sequence 5'-DHWATTGAYTWWD-3' on a variety of gene promoters such as those of HNF3B and TTR (By similarity).

Cellular Location

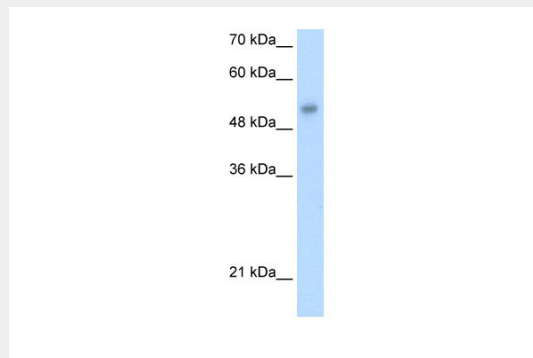
Nucleus {ECO:0000255|PROSITE-ProRule:PRU00108, ECO:0000255|PROSITE-ProRule:PRU00374}

ONECUT3 antibody - C-terminal region - Protocols

Provided below are standard protocols that you may find useful for product applications.

- [Western Blot](#)
- [Blocking Peptides](#)
- [Dot Blot](#)
- [Immunohistochemistry](#)
- [Immunofluorescence](#)
- [Immunoprecipitation](#)
- [Flow Cytometry](#)
- [Cell Culture](#)

ONECUT3 antibody - C-terminal region - Images



WB Suggested Anti-ONECUT3 Antibody Titration: 1.25 μ g/ml
Positive Control: HepG2 cell lysate