

RARG antibody - middle region
Rabbit Polyclonal Antibody
Catalog # AI10671**Specification**

RARG antibody - middle region - Product Information

Application	WB
Primary Accession	P13631
Other Accession	NM_000966 , NP_000957
Reactivity	Human, Mouse, Rat, Rabbit, Sheep, Horse, Bovine, Dog
Predicted Host	Human, Mouse, Rat, Pig, Bovine, Dog
Clonality	Rabbit
Calculated MW	Polyclonal 50kDa KDa

RARG antibody - middle region - Additional Information**Gene ID** 5916**Alias Symbol** **NR1B3, RARC****Other Names**

Retinoic acid receptor gamma, RAR-gamma, Nuclear receptor subfamily 1 group B member 3, RARG, NR1B3

Format

Liquid. Purified antibody supplied in 1x PBS buffer with 0.09% (w/v) sodium azide and 2% sucrose.

Reconstitution & Storage

Add 50 ul of distilled water. Final anti-RARG antibody concentration is 1 mg/ml in PBS buffer with 2% sucrose. For longer periods of storage, store at 20°C. Avoid repeat freeze-thaw cycles.

Precautions

RARG antibody - middle region is for research use only and not for use in diagnostic or therapeutic procedures.

RARG antibody - middle region - Protein Information**Name** RARG**Synonyms** NR1B3**Function**

Receptor for retinoic acid. Retinoic acid receptors bind as heterodimers to their target response elements in response to their ligands, all-trans or 9-cis retinoic acid, and regulate gene expression in various biological processes. The RAR/RXR heterodimers bind to the retinoic acid response elements (RARE) composed of tandem 5'-AGGTCA-3' sites known as DR1-DR5. In the absence of ligand, acts mainly as an activator of gene expression due to weak binding to corepressors.

Required for limb bud development. In concert with RARA or RARB, required for skeletal growth, matrix homeostasis and growth plate function (By similarity).

Cellular Location

Nucleus. Cytoplasm

Tissue Location

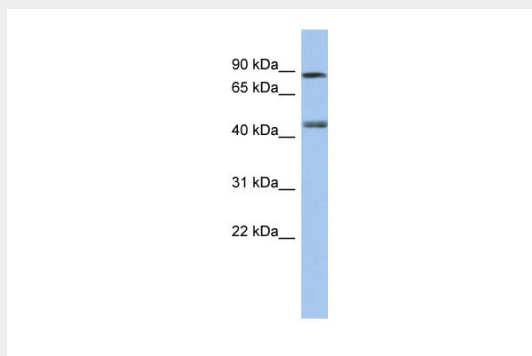
Expressed in aortic endothelial cells (at protein level).

RARG antibody - middle region - Protocols

Provided below are standard protocols that you may find useful for product applications.

- [Western Blot](#)
- [Blocking Peptides](#)
- [Dot Blot](#)
- [Immunohistochemistry](#)
- [Immunofluorescence](#)
- [Immunoprecipitation](#)
- [Flow Cytometry](#)
- [Cell Culture](#)

RARG antibody - middle region - Images



WB Suggested Anti-RARG Antibody Titration: 0.2-1 μ g/ml

ELISA Titer: 1:312500

Positive Control: Human brain

RARG antibody - middle region - References

Dey, N., (2007) Mol. Cell. Biol. 27 (11), 4179-4197
Reconstitution and Storage: For short term use, store at 2-8C up to 1 week. For long term storage, store at -20C in small aliquots to prevent freeze-thaw cycles.