

ASGR2 antibody - N-terminal region
Rabbit Polyclonal Antibody
Catalog # AI10664**Specification**

ASGR2 antibody - N-terminal region - Product Information

Application	IHC, WB
Primary Accession	P07307
Other Accession	NM_001181 , NP_001172
Reactivity	Human, Pig
Predicted	Human
Host	Rabbit
Clonality	Polyclonal
Calculated MW	34kDa KDa

ASGR2 antibody - N-terminal region - Additional Information**Gene ID** 433**Alias Symbol** HL-2, HBXBP, ASGPR2, ASGP-R2, CLEC4H2**Other Names**

Asialoglycoprotein receptor 2, ASGP-R 2, ASGPR 2, C-type lectin domain family 4 member H2, Hepatic lectin H2, HL-2, ASGR2, CLEC4H2

Format

Liquid. Purified antibody supplied in 1x PBS buffer with 0.09% (w/v) sodium azide and 2% sucrose.

Reconstitution & Storage

Add 100 ul of distilled water. Final anti-ASGR2 antibody concentration is 1 mg/ml in PBS buffer with 2% sucrose. For longer periods of storage, store at 20°C. Avoid repeat freeze-thaw cycles.

Precautions

ASGR2 antibody - N-terminal region is for research use only and not for use in diagnostic or therapeutic procedures.

ASGR2 antibody - N-terminal region - Protein Information**Name** ASGR2**Synonyms** CLEC4H2**Function**

Mediates the endocytosis of plasma glycoproteins to which the terminal sialic acid residue on their complex carbohydrate moieties has been removed. The receptor recognizes terminal galactose and N- acetylgalactosamine units. After ligand binding to the receptor, the resulting complex is internalized and transported to a sorting organelle, where receptor and ligand are disassociated. The receptor then returns to the cell membrane surface.

Cellular Location

Membrane; Single-pass type II membrane protein.

Tissue Location

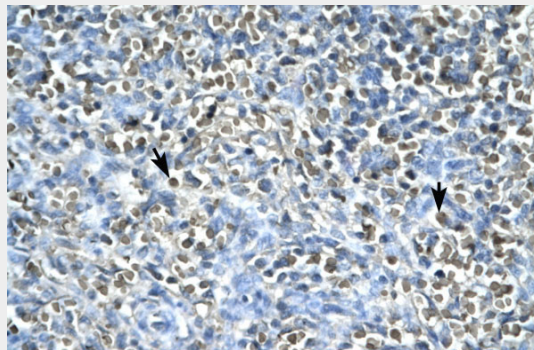
Expressed exclusively in hepatic parenchymal cells.

ASGR2 antibody - N-terminal region - Protocols

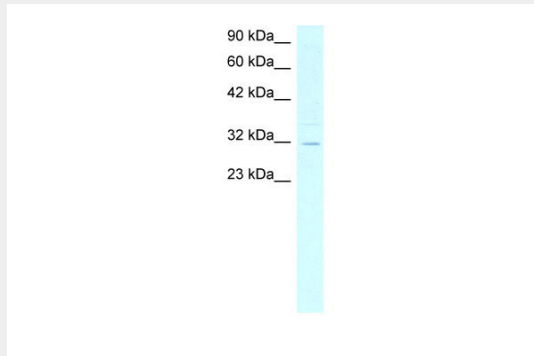
Provided below are standard protocols that you may find useful for product applications.

- [Western Blot](#)
- [Blocking Peptides](#)
- [Dot Blot](#)
- [Immunohistochemistry](#)
- [Immunofluorescence](#)
- [Immunoprecipitation](#)
- [Flow Cytometry](#)
- [Cell Culture](#)

ASGR2 antibody - N-terminal region - Images



Human Spleen



90 kDa__
60 kDa__
42 kDa__
32 kDa__
23 kDa__

WB Suggested Anti-ASGR2 Antibody Titration: 4.0 μ g/ml

Positive Control: HepG2 cell lysate

ASGR2 is supported by BioGPS gene expression data to be expressed in HepG2

ASGR2 antibody - N-terminal region - References

Yik, J.H., et al., (2002) J.Biol.Chem.277(43),40844-40852
Reconstitution and Storage: For short term use, store at 2-8C up to 1 week. For long term storage, store at -20C in small aliquots to prevent freeze-thaw cycles.