

**Nfe2l1 Antibody - C-terminal region**  
**Rabbit Polyclonal Antibody**  
**Catalog # AI10211**

**Specification**

---

**Nfe2l1 Antibody - C-terminal region - Product Information**

Application	WB
Primary Accession	<a href="#">O3V3M1</a>
Other Accession	<a href="#">NM_008686</a> , <a href="#">NP_032712</a>
Reactivity	Human, Mouse, Rat, Horse, Bovine, Dog
Predicted	Human, Mouse, Rat, Pig, Bovine, Guinea Pig, Dog
Host	Rabbit
Clonality	Polyclonal
Calculated MW	49kDa KDa

**Nfe2l1 Antibody - C-terminal region - Additional Information**

Alias Symbol	AA408798, AW212678, LCR-F1, Lcrf1, NRF1, TCF-11, TCF11
--------------	--

**Format**

Liquid. Purified antibody supplied in 1x PBS buffer with 0.09% (w/v) sodium azide and 2% sucrose.

**Reconstitution & Storage**

Add 50  $\mu$ l of distilled water. Final Anti-Nfe2l1 antibody concentration is 1 mg/ml in PBS buffer with 2% sucrose. For longer periods of storage, store at -20°C. Avoid repeat freeze-thaw cycles.

**Precautions**

Nfe2l1 Antibody - C-terminal region is for research use only and not for use in diagnostic or therapeutic procedures.

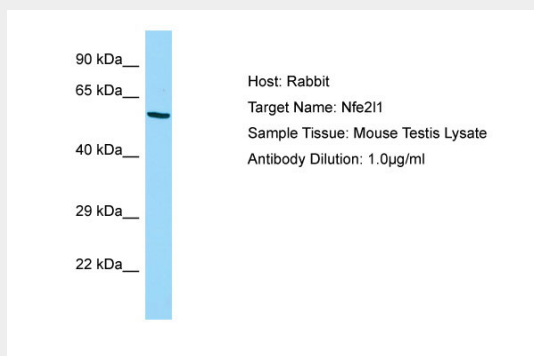
**Nfe2l1 Antibody - C-terminal region - Protein Information**

**Nfe2l1 Antibody - C-terminal region - Protocols**

Provided below are standard protocols that you may find useful for product applications.

- [Western Blot](#)
- [Blocking Peptides](#)
- [Dot Blot](#)
- [Immunohistochemistry](#)
- [Immunofluorescence](#)
- [Immunoprecipitation](#)
- [Flow Cytometry](#)
- [Cell Culture](#)

**Nfe2l1 Antibody - C-terminal region - Images**



**Host:**Rabbit  
**Target Name:**Nfe2l1  
**Sample Tissue:** Mouse Testis lysates  
**Antibody Dilution:**1.µg/ml