

CHRNA2 antibody - middle region
Rabbit Polyclonal Antibody
Catalog # AI10149**Specification**

CHRNA2 antibody - middle region - Product Information

Application	IHC, WB
Primary Accession	P17787
Other Accession	P17787 , NP_000739 , NM_000748
Reactivity	Human, Mouse, Rat, Pig, Dog, Guinea Pig, Bovine
Predicted Host	Human, Mouse, Pig, Dog, Bovine
Clonality	Rabbit
Calculated MW	Polyclonal 57 kDa KDa

CHRNA2 antibody - middle region - Additional Information**Gene ID** 1141**Alias Symbol** **EFNL3, nAChRB2**
Other Names
Neuronal acetylcholine receptor subunit beta-2, CHRNA2**Target/Specificity**

Mutations in nAChRs are found in a rare form of nocturnal frontal lobe epilepsy . Previously, some nAChR mutations have been described that are associated with additional neurological features such as psychiatric disorders or cognitive defects. A new CHRNA2 mutation located in transmembrane region 3 (M3), outside the known ADFLE mutation cluster. The CHRNA2 mutation I312M, which occurred de novo in twins, markedly increases the receptor's sensitivity to acetylcholine. Phenotypically, the mutation is associated not only with typical ADFLE, but also with distinct deficits in memory. The cognitive problems are most obvious in tasks requiring the organization and storage of verbal information.

Format

Liquid. Purified antibody supplied in 1x PBS buffer with 0.09% (w/v) sodium azide and 2% sucrose.

Reconstitution & Storage

Add 100 ul of distilled water. Final anti-CHRNA2 antibody concentration is 1 mg/ml in PBS buffer with 2% sucrose. For longer periods of storage, store at -20°C. Avoid repeat freeze-thaw cycles.

Precautions

CHRNA2 antibody - middle region is for research use only and not for use in diagnostic or therapeutic procedures.

CHRNA2 antibody - middle region - Protein Information**Name** CHRNA2

Function

After binding acetylcholine, the AChR responds by an extensive change in conformation that affects all subunits and leads to opening of an ion-conducting channel across the plasma membrane permeable to sodium ions.

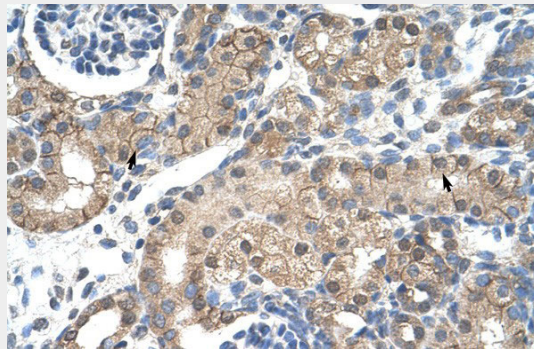
Cellular Location

Postsynaptic cell membrane; Multi-pass membrane protein. Cell membrane; Multi-pass membrane protein

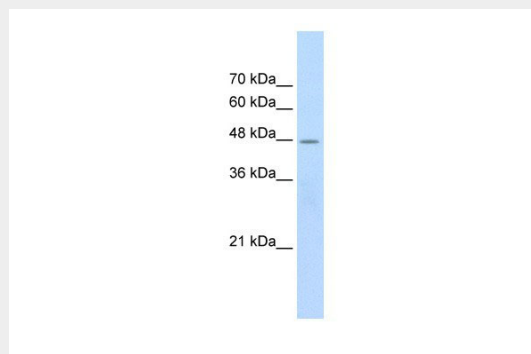
CHRNA2 antibody - middle region - Protocols

Provided below are standard protocols that you may find useful for product applications.

- [Western Blot](#)
- [Blocking Peptides](#)
- [Dot Blot](#)
- [Immunohistochemistry](#)
- [Immunofluorescence](#)
- [Immunoprecipitation](#)
- [Flow Cytometry](#)
- [Cell Culture](#)

CHRNA2 antibody - middle region - Images

CHRNA2 antibody - middle region (AI10149) in Human kidney cells using Immunohistochemistry
Human kidney



CHRNA2 antibody - middle region (AI10149) in Human Jurkat cells using Western Blot
WB Suggested Anti-CHRNA2 Antibody Titration: 2.5µg/ml
Positive Control: Jurkat cell lysate
CHRNA2 is supported by BioGPS gene expression data to be expressed in Jurkat

CHRNA2 antibody - middle region - Background

This is a rabbit polyclonal antibody against CHRNA2. It was validated on Western Blot and immunohistochemistry by Abgent. At Abgent we manufacture rabbit polyclonal antibodies on a large scale (200-1000 products/month) of high throughput manner. Our antibodies are peptide based and protein family oriented. We usually provide antibodies covering each member of a whole protein family of your interest. We also use our best efforts to provide you antibodies recognize various epitopes of a target protein. For availability of antibody needed for your experiment, please inquire (sales@abgent.com).