

**CBX8 antibody - N-terminal region**  
**Rabbit Polyclonal Antibody**  
**Catalog # AI10139****Specification**

---

**CBX8 antibody - N-terminal region - Product Information**

Application	WB
Primary Accession	<a href="#">O9HC52</a>
Other Accession	<a href="#">O9HC52</a> , <a href="#">NP_065700</a> , <a href="#">NM_020649</a>
Reactivity	Human, Mouse, Rat, Rabbit, Zebrafish, Pig, Dog, Guinea Pig, Horse, Bovine, Yeast
Predicted	Human, Mouse, Rat, Rabbit, Zebrafish, Pig, Chicken, Dog, Bovine
Host	Rabbit
Clonality	Polyclonal
Calculated MW	43 kDa KDa

**CBX8 antibody - N-terminal region - Additional Information****Gene ID** 57332**Alias Symbol** HPC3, PC3, RC1**Other Names**

Chromobox protein homolog 8, Polycomb 3 homolog, Pc3, hPc3, Rectachrome 1, CBX8, PC3, RC1

**Target/Specificity**

CBX8 is one of the proteins homolog to the Polycomb group (PcG) proteins. They assemble to form large multiprotein complexes involved in gene silencing. Evidence suggests that PcG complexes are heterogeneous with respect to both protein composition and specific function.

**Format**

Liquid. Purified antibody supplied in 1x PBS buffer with 0.09% (w/v) sodium azide and 2% sucrose.

**Reconstitution & Storage**

Add 50 ul of distilled water. Final anti-CBX8 antibody concentration is 1 mg/ml in PBS buffer with 2% sucrose. For longer periods of storage, store at -20°C. Avoid repeat freeze-thaw cycles.

**Precautions**

CBX8 antibody - N-terminal region is for research use only and not for use in diagnostic or therapeutic procedures.

**CBX8 antibody - N-terminal region - Protein Information****Name** CBX8**Synonyms** PC3, RC1**Function**

Component of a Polycomb group (PcG) multiprotein PRC1-like complex, a complex class required to maintain the transcriptionally repressive state of many genes, including Hox genes, throughout development. PcG PRC1 complex acts via chromatin remodeling and modification of histones; it mediates monoubiquitination of histone H2A 'Lys-119', rendering chromatin heritably changed in its expressibility.

#### Cellular Location

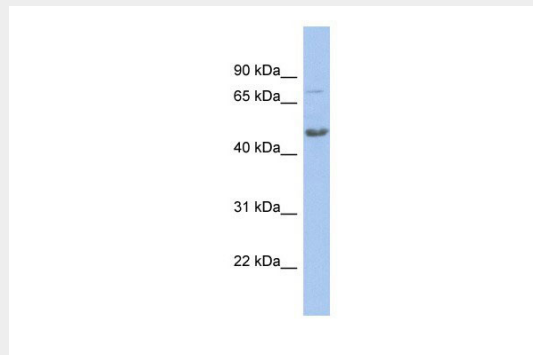
Nucleus.

#### CBX8 antibody - N-terminal region - Protocols

Provided below are standard protocols that you may find useful for product applications.

- [Western Blot](#)
- [Blocking Peptides](#)
- [Dot Blot](#)
- [Immunohistochemistry](#)
- [Immunofluorescence](#)
- [Immunoprecipitation](#)
- [Flow Cytometry](#)
- [Cell Culture](#)

#### CBX8 antibody - N-terminal region - Images



CBX8 antibody - N-terminal region (AI10139) in Human COLO205 cells using Western Blot

WB Suggested Anti-CBX8 Antibody Titration: 0.2-1 µg/ml

ELISA Titer: 1:12500

Positive Control: COLO205 cell lysate

#### CBX8 antibody - N-terminal region - Background

This is a rabbit polyclonal antibody against CBX8. It was validated on Western Blot using a cell lysate as a positive control. Abgent strives to provide antibodies covering each member of a whole protein family of your interest. We also use our best efforts to provide you antibodies recognize various epitopes of a target protein. For availability of antibody needed for your experiment, please inquire (sales@abgent.com).