

**PHF16 antibody - middle region**  
**Rabbit Polyclonal Antibody**  
**Catalog # AI10126****Specification**

---

**PHF16 antibody - middle region - Product Information**

Application	IHC, WB
Primary Accession	<a href="#">O92613</a>
Other Accession	<a href="#">O92613</a> , <a href="#">NP_055550</a> , <a href="#">NM_014735</a>
Reactivity	Human, Mouse, Rat, Rabbit, Pig, Dog, Guinea Pig, Horse, Bovine
Predicted	Mouse, Rabbit, Pig, Dog, Guinea Pig, Horse, Bovine
Host	Rabbit
Clonality	Polyclonal
Calculated MW	94 kDa

**PHF16 antibody - middle region - Additional Information****Gene ID** 9767**Alias Symbol** **JADE3, KIAA0215, MGC138748, MGC138749****Other Names**

Protein Jade-3, Jade family PHD finger protein 3, PHD finger protein 16, JADE3, KIAA0215, PHF16

**Target/Specificity**

This gene is part of a gene cluster on chromosome Xp11.23. PHF16 contains a zinc finger motif often found in transcriptional regulators, however, its exact function is not known. This gene is part of a gene cluster on chromosome Xp11.23. The encoded protein contains a zinc finger motif often found in transcriptional regulators, however, its exact function is not known. Alternative splicing results in multiple transcript variants encoding the same protein.

**Format**

Liquid. Purified antibody supplied in 1x PBS buffer with 0.09% (w/v) sodium azide and 2% sucrose.

**Reconstitution & Storage**

Add 50 ul of distilled water. Final anti-PHF16 antibody concentration is 1 mg/ml in PBS buffer with 2% sucrose. For longer periods of storage, store at -20°C. Avoid repeat freeze-thaw cycles.

**Precautions**

PHF16 antibody - middle region is for research use only and not for use in diagnostic or therapeutic procedures.

**PHF16 antibody - middle region - Protein Information****Name** JADE3**Synonyms** KIAA0215, PHF16

### Function

Scaffold subunit of some HBO1 complexes, which have a histone H4 acetyltransferase activity.

### Tissue Location

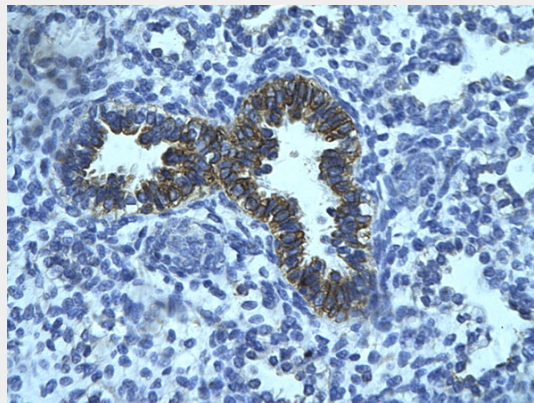
Ubiquitously expressed, with highest levels in placenta and uterus.

### PHF16 antibody - middle region - Protocols

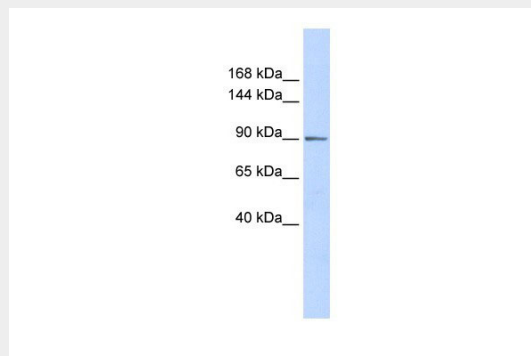
Provided below are standard protocols that you may find useful for product applications.

- [Western Blot](#)
- [Blocking Peptides](#)
- [Dot Blot](#)
- [Immunohistochemistry](#)
- [Immunofluorescence](#)
- [Immunoprecipitation](#)
- [Flow Cytometry](#)
- [Cell Culture](#)

### PHF16 antibody - middle region - Images



Human Lung  
Rabbit Anti-PHF16 Antibody  
Paraffin Embedded Tissue: Human bronchiole epithelium  
Cellular Data: Epithelial cells of renal tubule  
Antibody Concentration: 4.0-8.0 µg/ml  
Magnification: 400X



PHF16 antibody - middle region (AI10126) in Human Placenta cells using Western Blot

WB Suggested Anti-PHF16 Antibody Titration: 0.2-1 µg/ml  
ELISA Titer: 1:312500  
Positive Control: Human Placenta

#### **PHF16 antibody - middle region - Background**

This is a rabbit polyclonal antibody against PHF16. It was validated on Western Blot using a cell lysate as a positive control. Abgent strives to provide antibodies covering each member of a whole protein family of your interest. We also use our best efforts to provide you antibodies recognize various epitopes of a target protein. For availability of antibody needed for your experiment, please inquire ([sales@abgent.com](mailto:sales@abgent.com)).