

TRIM9 antibody - middle region
Rabbit Polyclonal Antibody
Catalog # AI10121**Specification**

TRIM9 antibody - middle region - Product Information

Application	WB
Primary Accession	O9C026
Other Accession	O9C026 , NP_055978 , NM_015163
Reactivity	Human, Mouse, Rat, Rabbit, Pig, Dog, Guinea Pig, Horse, Bovine
Predicted Host	Human, Mouse, Rat, Dog, Horse, Bovine
Clonality	Rabbit
Calculated MW	Polyclonal 79 kDa KDa

TRIM9 antibody - middle region - Additional Information**Gene ID** 114088**Alias Symbol** KIAA0282, RNF91, SPRING**Other Names**

E3 ubiquitin-protein ligase TRIM9, 632-, RING finger protein 91, Tripartite motif-containing protein 9, TRIM9, KIAA0282, RNF91

Target/Specificity

TRIM9 is a member of the tripartite motif (TRIM) family. The TRIM motif includes three zinc-binding domains, a RING, a B-box type 1 and a B-box type 2, and a coiled-coil region. The protein localizes to cytoplasmic bodies. Its function has not been identified. Alternate splicing of this gene generates two transcript variants encoding different isoforms. The protein encoded by this gene is a member of the tripartite motif (TRIM) family. The TRIM motif includes three zinc-binding domains, a RING, a B-box type 1 and a B-box type 2, and a coiled-coil region. The protein localizes to cytoplasmic bodies. Its function has not been identified. Alternate splicing of this gene generates two transcript variants encoding different isoforms.

Format

Liquid. Purified antibody supplied in 1x PBS buffer with 0.09% (w/v) sodium azide and 2% sucrose.

Reconstitution & Storage

Add 50 ul of distilled water. Final anti-TRIM9 antibody concentration is 1 mg/ml in PBS buffer with 2% sucrose. For longer periods of storage, store at -20°C. Avoid repeat freeze-thaw cycles.

Precautions

TRIM9 antibody - middle region is for research use only and not for use in diagnostic or therapeutic procedures.

TRIM9 antibody - middle region - Protein Information

Name TRIM9

Synonyms KIAA0282, RNF91

Function

E3 ubiquitin-protein ligase which ubiquitinates itself in cooperation with an E2 enzyme UBE2D2/UBC4 and serves as a targeting signal for proteasomal degradation. May play a role in regulation of neuronal functions and may also participate in the formation or breakdown of abnormal inclusions in neurodegenerative disorders. May act as a regulator of synaptic vesicle exocytosis by controlling the availability of SNAP25 for the SNARE complex formation.

Cellular Location

Cytoplasm. Cell projection, dendrite. Cytoplasmic vesicle, secretory vesicle, synaptic vesicle {ECO:0000250|UniProtKB:Q91ZY8}. Synapse {ECO:0000250|UniProtKB:Q91ZY8} Cytoplasm, cytoskeleton {ECO:0000250|UniProtKB:Q91ZY8}. Note=Enriched at synaptic terminals where it exists in a soluble form and a synaptic vesicle-associated form. Associated with the cytoskeleton (By similarity). Found in proximal dendrites of pyramidal neurons in the cerebral cortex and hippocampus, and Purkinje cells in the cerebellum (PubMed:20085810). {ECO:0000250|UniProtKB:Q91ZY8, ECO:0000269|PubMed:20085810}

Tissue Location

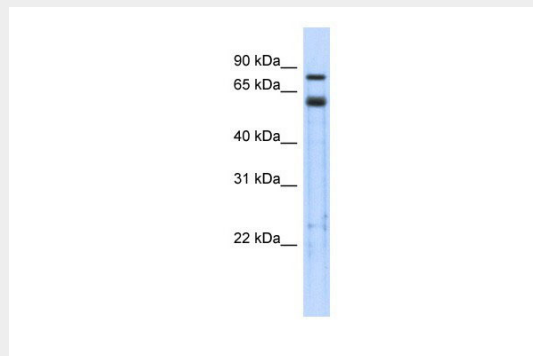
Brain. Highly expressed in the cerebral cortex (at protein level). Severely decreased in the affected brain areas in Parkinson disease and dementia with Lewy bodies

TRIM9 antibody - middle region - Protocols

Provided below are standard protocols that you may find useful for product applications.

- [Western Blot](#)
- [Blocking Peptides](#)
- [Dot Blot](#)
- [Immunohistochemistry](#)
- [Immunofluorescence](#)
- [Immunoprecipitation](#)
- [Flow Cytometry](#)
- [Cell Culture](#)

TRIM9 antibody - middle region - Images



TRIM9 antibody - middle region (A110121) in Transfected 293T cells using Western Blot
WB Suggested Anti-TRIM9 Antibody Titration: 0.2-1 µg/ml
ELISA Titer: 1:62500

Positive Control: Transfected 293T

TRIM9 antibody - middle region - Background

This is a rabbit polyclonal antibody against TRIM9. It was validated on Western Blot using a cell lysate as a positive control. Abgent strives to provide antibodies covering each member of a whole protein family of your interest. We also use our best efforts to provide you antibodies recognize various epitopes of a target protein. For availability of antibody needed for your experiment, please inquire (sales@abgent.com).