

**PIK3R3 antibody - middle region**  
**Rabbit Polyclonal Antibody**  
**Catalog # AI10093**

**Specification**

---

**PIK3R3 antibody - middle region - Product Information**

Application	WB
Primary Accession	<a href="#">O92569</a>
Other Accession	<a href="#">O92569</a> , <a href="#">NP_003620</a> , <a href="#">NM_003629</a>
Reactivity	Human, Mouse, Rat, Rabbit, Zebrafish, Pig, Dog, Guinea Pig, Horse, Bovine
Predicted	Human, Mouse, Rat, Rabbit, Zebrafish, Pig, Chicken, Dog, Guinea Pig, Bovine
Host	Rabbit
Clonality	Polyclonal
Calculated MW	54 kDa KDa

**PIK3R3 antibody - middle region - Additional Information**

**Gene ID** 8503

**Alias Symbol** DKFZp686P05226, FLJ41892, p55-GAMMA, p55

**Other Names**

Phosphatidylinositol 3-kinase regulatory subunit gamma, PI3-kinase regulatory subunit gamma, PI3K regulatory subunit gamma, PtdIns-3-kinase regulatory subunit gamma, Phosphatidylinositol 3-kinase 55 kDa regulatory subunit gamma, PI3-kinase subunit p55-gamma, PtdIns-3-kinase regulatory subunit p55-gamma, p55PIK, PIK3R3

**Target/Specificity**

PIK3R3 binds to activated (phosphorylated) protein-tyrosine kinases through its SH2 domain and regulates their kinase activity. During insulin stimulation, it also binds to IRS-1.

**Format**

Liquid. Purified antibody supplied in 1x PBS buffer with 0.09% (w/v) sodium azide and 2% sucrose.

**Reconstitution & Storage**

Add 100 ul of distilled water. Final anti-PIK3R3 antibody concentration is 1 mg/ml in PBS buffer with 2% sucrose. For longer periods of storage, store at -20°C. Avoid repeat freeze-thaw cycles.

**Precautions**

PIK3R3 antibody - middle region is for research use only and not for use in diagnostic or therapeutic procedures.

**PIK3R3 antibody - middle region - Protein Information**

**Name** PIK3R3

**Function**

Binds to activated (phosphorylated) protein-tyrosine kinases through its SH2 domain and regulates their kinase activity. During insulin stimulation, it also binds to IRS-1.

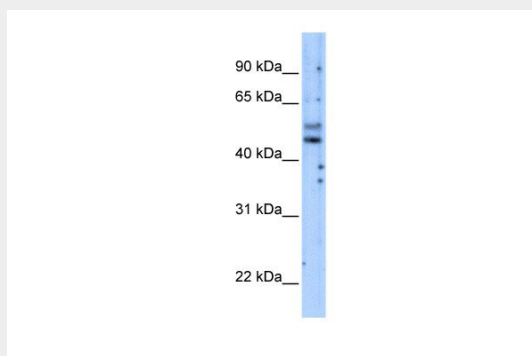
**Tissue Location**

Highest levels in brain and testis. Lower levels in adipose tissue, kidney, heart, lung and skeletal muscle

**PIK3R3 antibody - middle region - Protocols**

Provided below are standard protocols that you may find useful for product applications.

- [Western Blot](#)
- [Blocking Peptides](#)
- [Dot Blot](#)
- [Immunohistochemistry](#)
- [Immunofluorescence](#)
- [Immunoprecipitation](#)
- [Flow Cytometry](#)
- [Cell Culture](#)

**PIK3R3 antibody - middle region - Images**

PIK3R3 antibody - middle region (AI10093) in Transfected 293T cells using Western Blot  
WB Suggested Anti-PIK3R3 Antibody Titration: 5.0µg/ml  
Positive Control: Transfected 293T

**PIK3R3 antibody - middle region - Background**

This is a rabbit polyclonal antibody against PIK3R3. It was validated on Western Blot using a cell lysate as a positive control. Abgent strives to provide antibodies covering each member of a whole protein family of your interest. We also use our best efforts to provide you antibodies recognize various epitopes of a target protein. For availability of antibody needed for your experiment, please inquire (sales@abgent.com).