

BBX antibody - middle region
Rabbit Polyclonal Antibody
Catalog # AI10081**Specification**

BBX antibody - middle region - Product Information

Application	WB
Primary Accession	Q8WY36
Other Accession	Q8WY36 , NP_064620 , NM_020235
Reactivity	Human, Mouse, Rat, Rabbit, Dog, Guinea Pig, Horse, Bovine
Predicted	Human, Mouse, Rat, Rabbit, Dog, Horse, Bovine
Host	Rabbit
Clonality	Polyclonal
Calculated MW	101 kDa KDa

BBX antibody - middle region - Additional Information**Gene ID** 56987**Alias Symbol** HSPC339, MDS001, HBP2**Other Names**

HMG box transcription factor BBX, Bobby sox homolog, HMG box-containing protein 2, BBX, HBP2

Target/Specificity

BBX is a transcription factor that is necessary for cell cycle progression from G1 to S phase.

Format

Liquid. Purified antibody supplied in 1x PBS buffer with 0.09% (w/v) sodium azide and 2% sucrose.

Reconstitution & Storage

Add 50 ul of distilled water. Final anti-BBX antibody concentration is 1 mg/ml in PBS buffer with 2% sucrose. For longer periods of storage, store at -20°C. Avoid repeat freeze-thaw cycles.

Precautions

BBX antibody - middle region is for research use only and not for use in diagnostic or therapeutic procedures.

BBX antibody - middle region - Protein Information**Name** BBX**Synonyms** HBP2**Function**

Transcription factor that is necessary for cell cycle progression from G1 to S phase.

Cellular Location

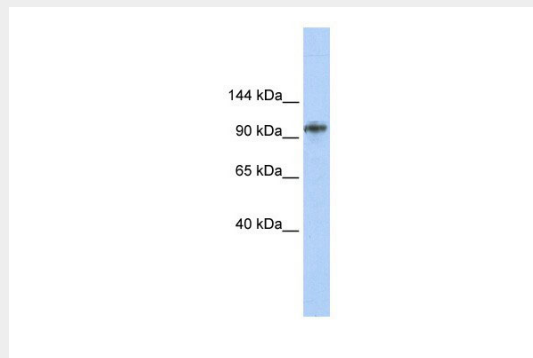
Nucleus.

BBX antibody - middle region - Protocols

Provided below are standard protocols that you may find useful for product applications.

- [Western Blot](#)
- [Blocking Peptides](#)
- [Dot Blot](#)
- [Immunohistochemistry](#)
- [Immunofluorescence](#)
- [Immunoprecipitation](#)
- [Flow Cytometry](#)
- [Cell Culture](#)

BBX antibody - middle region - Images



BBX antibody - middle region (AI10081) in Human MCF-7 cells using Western Blot
WB Suggested Anti-BBX Antibody Titration: 0.2-1 $\mu\text{g/ml}$
ELISA Titer: 1:312500
Positive Control: MCF7 cell lysate

BBX antibody - middle region - Background

This is a rabbit polyclonal antibody against BBX. It was validated on Western Blot using a cell lysate as a positive control. Abgent strives to provide antibodies covering each member of a whole protein family of your interest. We also use our best efforts to provide you antibodies recognize various epitopes of a target protein. For availability of antibody needed for your experiment, please inquire (sales@abgent.com).