

LHX1 antibody - N-terminal region
Rabbit Polyclonal Antibody
Catalog # AI10054**Specification**

LHX1 antibody - N-terminal region - Product Information

Application	WB
Primary Accession	P48742
Other Accession	P48742 , NP_005559 , NM_005568
Reactivity	Human, Mouse, Rat, Rabbit, Pig, Dog, Guinea Pig, Horse, Bovine
Predicted Host	Human, Mouse, Rat, Chicken, Bovine
Clonality	Rabbit
Calculated MW	Polyclonal 45 kDa KDa

LHX1 antibody - N-terminal region - Additional Information**Gene ID** 3975**Alias Symbol** LIM1, LIM-1**Other Names**

LIM/homeobox protein Lhx1, LIM homeobox protein 1, Homeobox protein Lim-1, hLim-1, LHX1, LIM-1, LIM1

Target/Specificity

LHX1 is a member of a large protein family which contains the LIM domain, a unique cysteine-rich zinc-binding domain. It may function as a transcriptional regulator and be involved in control of differentiation and development of neural and lymphoid cells.

Format

Liquid. Purified antibody supplied in 1x PBS buffer with 0.09% (w/v) sodium azide and 2% sucrose.

Reconstitution & Storage

Add 50 ul of distilled water. Final anti-LHX1 antibody concentration is 1 mg/ml in PBS buffer with 2% sucrose. For longer periods of storage, store at -20°C. Avoid repeat freeze-thaw cycles.

Precautions

LHX1 antibody - N-terminal region is for research use only and not for use in diagnostic or therapeutic procedures.

LHX1 antibody - N-terminal region - Protein Information**Name** LHX1**Synonyms** LIM-1, LIM1**Function**

Potential transcription factor. May play a role in early mesoderm formation and later in lateral mesoderm differentiation and neurogenesis.

Cellular Location

Nucleus.

Tissue Location

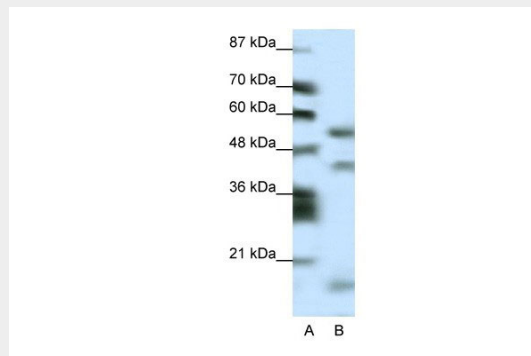
Expressed in the brain, thymus, and tonsils. Expressed in samples from patients with chronic myeloid leukemia (CML) and in 58% of acute myeloid leukemia (AML) cell lines

LHX1 antibody - N-terminal region - Protocols

Provided below are standard protocols that you may find useful for product applications.

- [Western Blot](#)
- [Blocking Peptides](#)
- [Dot Blot](#)
- [Immunohistochemistry](#)
- [Immunofluorescence](#)
- [Immunoprecipitation](#)
- [Flow Cytometry](#)
- [Cell Culture](#)

LHX1 antibody - N-terminal region - Images



LHX1 antibody - N-terminal region (AI10054) in Human HepG2 cells using Western Blot
WB Suggested Anti-LHX1 Antibody Titration: 0.2-1 µg/ml
Positive Control: HepG2 cell lysate

LHX1 antibody - N-terminal region - Background

This is a rabbit polyclonal antibody against LHX1. It was validated on Western Blot using a cell lysate as a positive control. Abgent strives to provide antibodies covering each member of a whole protein family of your interest. We also use our best efforts to provide you antibodies recognize various epitopes of a target protein. For availability of antibody needed for your experiment, please inquire (sales@abgent.com).