

LASS2 antibody - N-terminal region
Rabbit Polyclonal Antibody
Catalog # AI10036**Specification**

LASS2 antibody - N-terminal region - Product Information

Application	WB
Primary Accession	O96G23
Other Accession	O96G23 , CAI13332 , NM_022075
Reactivity	Human, Mouse, Rat, Rabbit, Dog, Guinea Pig, Horse, Bovine
Predicted Host	Mouse, Pig, Horse
Clonality	Rabbit
Calculated MW	Polyclonal 45 kDa KDa

LASS2 antibody - N-terminal region - Additional Information**Gene ID** 29956**Alias Symbol** CerS2, FLJ10243, L3, MGC987, SP260, TMSG1, LASS2**Other Names**

Ceramide synthase 2, CerS2, LAG1 longevity assurance homolog 2, SP260, Tumor metastasis-suppressor gene 1 protein, CERS2, LASS2, TMSG1

Target/Specificity

LASS2 is a protein that has sequence similarity to yeast longevity assurance gene 1. Mutation or overexpression of the related gene in yeast has been shown to alter yeast lifespan. The human protein may play a role in the regulation of cell growth. This gene encodes a protein that has sequence similarity to yeast longevity assurance gene 1. Mutation or overexpression of the related gene in yeast has been shown to alter yeast lifespan. The human protein may play a role in the regulation of cell growth. Alternatively spliced transcript variants encoding the same protein have been described.

Format

Liquid. Purified antibody supplied in 1x PBS buffer with 0.09% (w/v) sodium azide and 2% sucrose.

Reconstitution & Storage

Add 50 ul of distilled water. Final anti-LASS2 antibody concentration is 1 mg/ml in PBS buffer with 2% sucrose. For longer periods of storage, store at -20°C. Avoid repeat freeze-thaw cycles.

Precautions

LASS2 antibody - N-terminal region is for research use only and not for use in diagnostic or therapeutic procedures.

LASS2 antibody - N-terminal region - Protein Information

Name CERS2 {ECO:0000303|PubMed:17977534, ECO:0000312|HGNC:HGNC:14076}

Function

Ceramide synthase that catalyzes the transfer of the acyl chain from acyl-CoA to a sphingoid base, with high selectivity toward very-long-chain fatty acyl-CoA (chain length C22-C27) (PubMed:17977534, PubMed:18165233, PubMed:18541923, PubMed:19728861, PubMed:20937905, PubMed:22144673, PubMed:22661289, PubMed:26887952, PubMed:29632068). N- acylates sphinganine and sphingosine bases to form dihydroceramides and ceramides in de novo synthesis and salvage pathways, respectively (By similarity) (PubMed:17977534, PubMed:18165233, PubMed:18541923, PubMed:19728861, PubMed:20937905, PubMed:22144673, PubMed:22661289, PubMed:26887952, PubMed:29632068). Plays a non-redundant role in the synthesis of ceramides with very-long-chain fatty acids in kidney, liver and brain. Regulates the abundance of myelin-specific sphingolipids galactosylceramide and sulfatide that affects myelin sheath architecture and motor neuron functions (By similarity).

Cellular Location

Endoplasmic reticulum membrane; Multi-pass membrane protein

Tissue Location

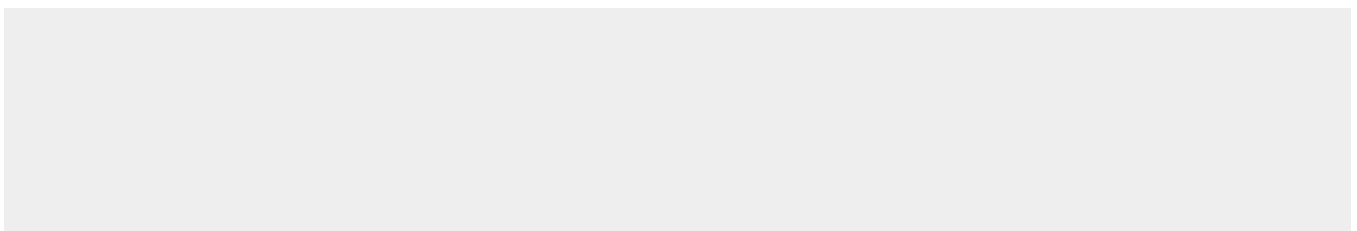
Expressed in kidney, liver, brain, heart, placenta and lung.

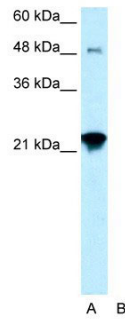
LASS2 antibody - N-terminal region - Protocols

Provided below are standard protocols that you may find useful for product applications.

- [Western Blot](#)
- [Blocking Peptides](#)
- [Dot Blot](#)
- [Immunohistochemistry](#)
- [Immunofluorescence](#)
- [Immunoprecipitation](#)
- [Flow Cytometry](#)
- [Cell Culture](#)

LASS2 antibody - N-terminal region - Images





LASS2 antibody - N-terminal region (AI10036) in Human HepG2 cells using Western Blot
WB Suggested Anti-LASS2 Antibody Titration: 0.2-1 µg/ml
Positive Control: HepG2 cell lysate
CERS2 is supported by BioGPS gene expression data to be expressed in HepG2

LASS2 antibody - N-terminal region - Background

This is a rabbit polyclonal antibody against LASS2. It was validated on Western Blot using a cell lysate as a positive control. Abgent strives to provide antibodies covering each member of a whole protein family of your interest. We also use our best efforts to provide you antibodies recognize various epitopes of a target protein. For availability of antibody needed for your experiment, please inquire (sales@abgent.com).