

**SSBP2 antibody - N-terminal region**  
**Rabbit Polyclonal Antibody**  
**Catalog # AI10031**

**Specification**

---

**SSBP2 antibody - N-terminal region - Product Information**

|                   |  |
|-------------------|--|
| Application       | IHC, WB  |
| Primary Accession | <a href="#">P81877</a>   |
| Other Accession   | <a href="#">P81877</a> , <a href="#">NP_036578</a> , <a href="#">NM_012446</a> |
| Reactivity        | Human, Mouse, Rat, Rabbit, Zebrafish, Pig, Dog, Guinea Pig, Horse, Bovine      |
| Predicted         | Human, Mouse, Rat, Pig, Chicken, Dog, Guinea Pig, Horse, Bovine                |
| Host              | Rabbit   |
| Clonality         | Polyclonal   |
| Calculated MW     | 38 kDa kDa   |

**SSBP2 antibody - N-terminal region - Additional Information**

**Gene ID** 23635

**Alias Symbol** DKFZp686F03273, HSPC116, SOSS-B2

**Other Names**

Single-stranded DNA-binding protein 2, Sequence-specific single-stranded-DNA-binding protein 2, SSBP2, SSDP2

**Target/Specificity**

SSBP2 is a member of a closely related, evolutionarily conserved, and ubiquitously expressed gene family. It is also a potential tumor suppressor.

**Format**

Liquid. Purified antibody supplied in 1x PBS buffer with 0.09% (w/v) sodium azide and 2% sucrose.

**Reconstitution & Storage**

Add 50 ul of distilled water. Final anti-SSBP2 antibody concentration is 1 mg/ml in PBS buffer with 2% sucrose. For longer periods of storage, store at -20°C. Avoid repeat freeze-thaw cycles.

**Precautions**

SSBP2 antibody - N-terminal region is for research use only and not for use in diagnostic or therapeutic procedures.

**SSBP2 antibody - N-terminal region - Protein Information**

**Name** SSBP2

**Synonyms** SSDP2

**Cellular Location**

Nucleus.

#### Tissue Location

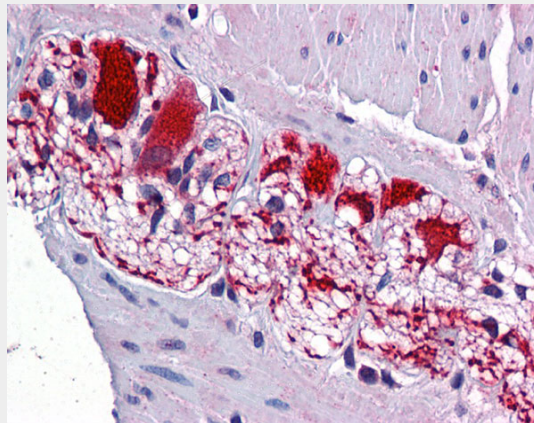
Ubiquitous..

#### SSBP2 antibody - N-terminal region - Protocols

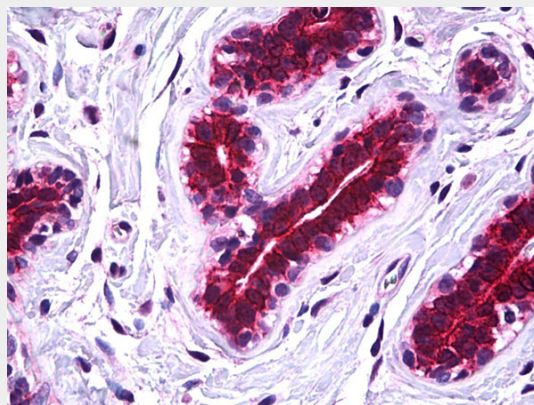
Provided below are standard protocols that you may find useful for product applications.

- [Western Blot](#)
- [Blocking Peptides](#)
- [Dot Blot](#)
- [Immunohistochemistry](#)
- [Immunofluorescence](#)
- [Immunoprecipitation](#)
- [Flow Cytometry](#)
- [Cell Culture](#)

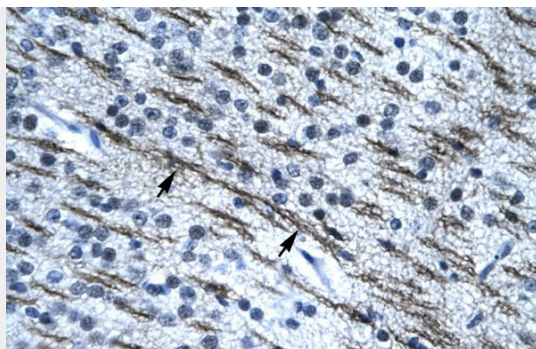
#### SSBP2 antibody - N-terminal region - Images



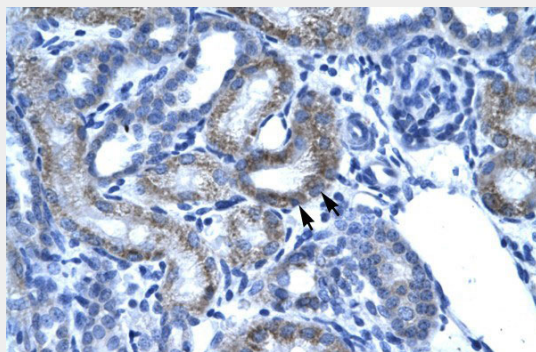
SSBP2 antibody - N-terminal region (AI10031) in Colon, myenteric plexus cells using Immunohistochemistry  
Colon, myenteric plexus



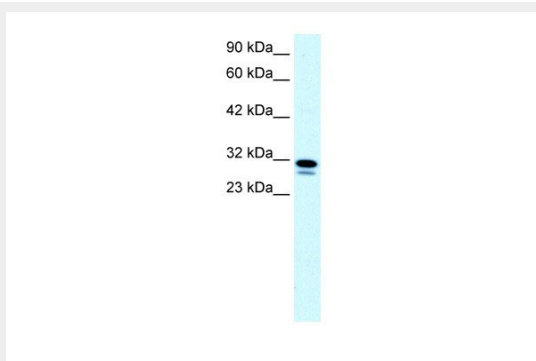
SSBP2 antibody - N-terminal region (AI10031) in breast cells using Immunohistochemistry  
IHC Information: Paraffin embedded breast tissue, tested with an antibody dilution of 5 µg/ml.



SSBP2 antibody - N-terminal region (AI10031) in Human Brain cells using Immunohistochemistry  
Rabbit Anti-SSBP2 Antibody  
Paraffin Embedded Tissue: Human Brain  
Cellular Data: Nerve fibre  
Antibody Concentration: 4.0-8.0 µg/ml  
Magnification: 400X



SSBP2 antibody - N-terminal region (AI10031) in Human kidney cells using Immunohistochemistry  
Rabbit Anti-SSBP2 Antibody  
Paraffin Embedded Tissue: Human Kidney  
Cellular Data: Epithelial cells of renal tubule  
Antibody Concentration: 4.0-8.0 µg/ml  
Magnification: 400X



SSBP2 antibody - N-terminal region (AI10031) in Human Raji cells using Western Blot  
WB Suggested Anti-SSBP2 Antibody Titration: 0.2-1 µg/ml  
ELISA Titer: 1:7812500  
Positive Control: Raji cell lysate

### **SSBP2 antibody - N-terminal region - Background**

This is a rabbit polyclonal antibody against SSBP2. It was validated on Western Blot and

immunohistochemistry by Abgent. At Abgent we manufacture rabbit polyclonal antibodies on a large scale (200-1000 products/month) of high throughput manner. Our antibodies are peptide based and protein family oriented. We usually provide antibodies covering each member of a whole protein family of your interest. We also use our best efforts to provide you antibodies recognize various epitopes of a target protein. For availability of antibody needed for your experiment, please inquire ([sales@abgent.com](mailto:sales@abgent.com)).