

TAL1 antibody - N-terminal region
Rabbit Polyclonal Antibody
Catalog # AI10015**Specification**

TAL1 antibody - N-terminal region - Product Information

Application	WB
Primary Accession	P17542
Other Accession	P17542 , NP_003180 , NM_003189
Reactivity	Human, Mouse, Rat, Rabbit, Pig, Dog, Bovine
Predicted Host	Human, Mouse, Rat, Rabbit, Bovine
Clonality	Rabbit
Calculated MW	Polyclonal 34 kDa KDa

TAL1 antibody - N-terminal region - Additional Information**Gene ID** 6886**Alias Symbol** **SCL, TCL5, tal-1, bHLHa17****Other Names**

T-cell acute lymphocytic leukemia protein 1, TAL-1, Class A basic helix-loop-helix protein 17, bHLHa17, Stem cell protein, T-cell leukemia/lymphoma protein 5, TAL1, BHLHA17, SCL, TCL5

Target/Specificity

TAL1 is implicated in the genesis of hemopoietic malignancies. It may play an important role in hemopoietic differentiation. It also serves as a positive regulator of erythroid differentiation

Format

Liquid. Purified antibody supplied in 1x PBS buffer with 0.09% (w/v) sodium azide and 2% sucrose.

Reconstitution & Storage

Add 50 ul of distilled water. Final anti-TAL1 antibody concentration is 1 mg/ml in PBS buffer with 2% sucrose. For longer periods of storage, store at -20°C. Avoid repeat freeze-thaw cycles.

Precautions

TAL1 antibody - N-terminal region is for research use only and not for use in diagnostic or therapeutic procedures.

TAL1 antibody - N-terminal region - Protein Information**Name** TAL1**Synonyms** BHLHA17, SCL, TCL5**Function**

Implicated in the genesis of hemopoietic malignancies. It may play an important role in

hemopoietic differentiation. Serves as a positive regulator of erythroid differentiation (By similarity).

Cellular Location

Nucleus {ECO:0000255|PROSITE-ProRule:PRU00981}.

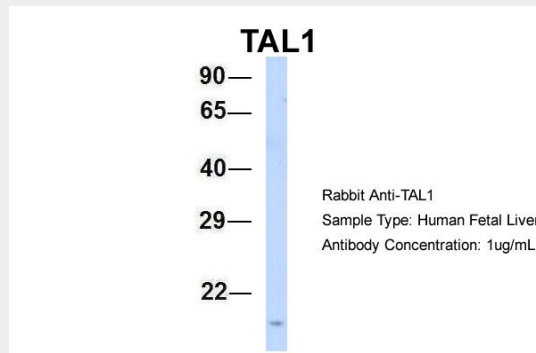
Tissue Location

Leukemic stem cell.

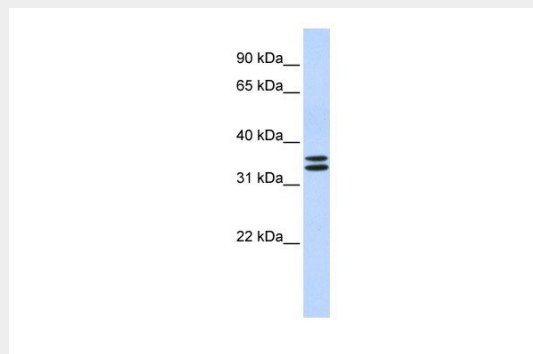
TAL1 antibody - N-terminal region - Protocols

Provided below are standard protocols that you may find useful for product applications.

- [Western Blot](#)
- [Blocking Peptides](#)
- [Dot Blot](#)
- [Immunohistochemistry](#)
- [Immunofluorescence](#)
- [Immunoprecipitation](#)
- [Flow Cytometry](#)
- [Cell Culture](#)

TAL1 antibody - N-terminal region - Images

TAL1 antibody - N-terminal region (AI10015) in Hum. Fetal Liver cells using Western Blot
Host:Rabbit
Target Name:TAL1
Sample Tissue:Human Fetal Liver
Antibody Dilution: 1.0µg/ml



TAL1 antibody - N-terminal region (AI10015) in Human Brain cells using Western Blot

WB Suggested Anti-TAL1 Antibody Titration: 0.2-1 µg/ml
ELISA Titer: 1:62500
Positive Control: Human brain

TAL1 antibody - N-terminal region - Background

This is a rabbit polyclonal antibody against TAL1. It was validated on Western Blot using a cell lysate as a positive control. Abgent strives to provide antibodies covering each member of a whole protein family of your interest. We also use our best efforts to provide you antibodies recognize various epitopes of a target protein. For availability of antibody needed for your experiment, please inquire (sales@abgent.com).