

**Anti-Cytokeratin 8/18 Antibody**  
**Mouse Monoclonal Antibody**  
**Catalog # AH13682**

**Specification**

---

**Anti-Cytokeratin 8/18 Antibody - Product Information**

Application	,1,14,3,4,
Primary Accession	<a href="#">P05787</a>
Other Accession	<a href="#">433845 (CK5)</a> , <a href="#">533782</a> , <a href="#">708445 (CK8)</a> , <a href="#">3856 (CK8)</a> , <a href="#">P05783 (CK18)</a>
Reactivity	<b>Human</b>
Host	<b>Mouse</b>
Clonality	<b>Monoclonal</b>
Isotype	<b>Mouse / IgG1, kappa</b>
Calculated MW	<b>53704</b>

**Anti-Cytokeratin 8/18 Antibody - Additional Information**

**Gene ID** 3856

**Other Names**

CARD2; CK8; CYK8; CYKER; Cytokeratin Endo A; DreK8; EndoA; K2C8; K8; Keratin 8; Krt 2.8; KRT8; Type-II Keratin Kb8. Cell Proliferation-inducing Gene 46 Protein; CK18; CYK18 Cytokeratin Endo B; K18; Keratin-18; Kerd; KRT18

**Format**

200ug/ml of Ab purified from Bioreactor Concentrate by Protein A/G. Prepared in 10mM PBS with 0.05% BSA & 0.05% azide. Also available WITHOUT BSA & azide at 1.0mg/ml.

**Storage**

Store at 2 to 8°C. Antibody is stable for 24 months.

**Precautions**

Anti-Cytokeratin 8/18 Antibody is for research use only and not for use in diagnostic or therapeutic procedures.

**Anti-Cytokeratin 8/18 Antibody - Protein Information**

**Name** KRT8

**Synonyms** CYK8

**Function**

Together with KRT19, helps to link the contractile apparatus to dystrophin at the costameres of striated muscle.

**Cellular Location**

Cytoplasm. Nucleus, nucleoplasm {ECO:0000250|UniProtKB:Q10758}. Nucleus matrix

{ECO:0000250|UniProtKB:Q10758}

#### **Tissue Location**

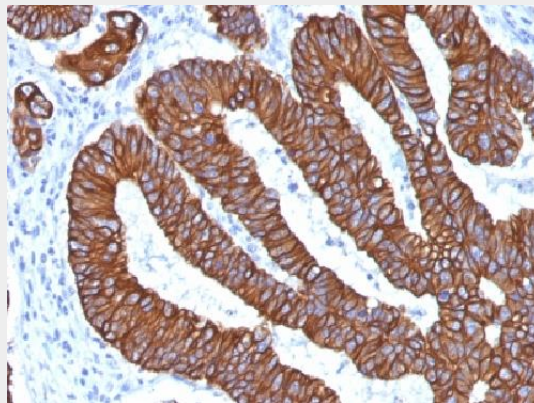
Observed in muscle fibers accumulating in the costameres of myoplasm at the sarcolemma membrane in structures that contain dystrophin and spectrin. Expressed in gingival mucosa and hard palate of the oral cavity.

#### **Anti-Cytokeratin 8/18 Antibody - Protocols**

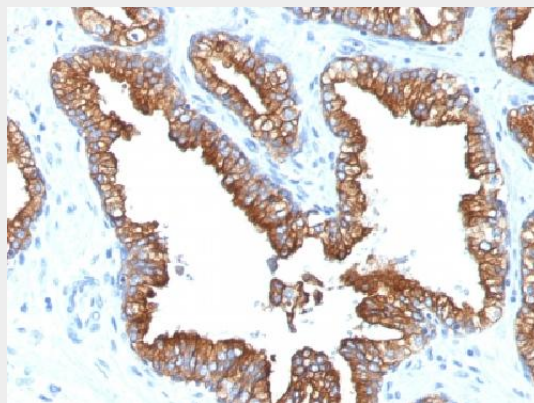
Provided below are standard protocols that you may find useful for product applications.

- [Western Blot](#)
- [Blocking Peptides](#)
- [Dot Blot](#)
- [Immunohistochemistry](#)
- [Immunofluorescence](#)
- [Immunoprecipitation](#)
- [Flow Cytometry](#)
- [Cell Culture](#)

#### **Anti-Cytokeratin 8/18 Antibody - Images**



Formalin-fixed, paraffin-embedded human Colon Carcinoma stained with Cytokeratin 8/18 Monoclonal Antibody (KRT8.18/1346).



Formalin-fixed, paraffin-embedded human Prostate Carcinoma stained with Cytokeratin 8/18 Monoclonal Antibody (KRT8.18/1346).

#### **Anti-Cytokeratin 8/18 Antibody - Background**

Cytokeratin 8 (CK8) belongs to the type II (or B or basic) subfamily of high molecular weight cytokeratins and exists in combination with cytokeratin 18 (CK18). This MAb recognizes all simple epithelia including glandular epithelium, for example thyroid, female breast, gastrointestinal tract, respiratory tract, and urogenital tract including transitional epithelium. All adenocarcinomas and most squamous carcinomas are positive but keratinizing squamous carcinomas are usually negative. This antibody is useful in demonstrating the presence of Paget cells; there is very little keratin 18 in the normal epidermis so only Paget cells are stained.