

**Anti-MAML2 Antibody**  
**Mouse Monoclonal Antibody**  
**Catalog # AH13592****Specification**

---

**Anti-MAML2 Antibody - Product Information**

Application	,1,14,3,4,
Primary Accession	<a href="#">Q8IZL2</a>
Other Accession	<a href="#">428214</a>
Reactivity	Human
Host	Mouse
Clonality	Monoclonal
Isotype	Mouse / IgG2a
Calculated MW	125197

**Anti-MAML2 Antibody - Additional Information****Gene ID** 84441**Other Names**

Mam-2; MAML2; Mastermind-like protein 2

**Format**

200ug/ml of Ab purified from Bioreactor Concentrate by Protein A/G. Prepared in 10mM PBS with 0.05% BSA &amp; 0.05% azide. Also available WITHOUT BSA &amp; azide at 1.0mg/ml.

**Storage**

Store at 2 to 8°C. Antibody is stable for 24 months.

**Precautions**

Anti-MAML2 Antibody is for research use only and not for use in diagnostic or therapeutic procedures.

**Anti-MAML2 Antibody - Protein Information****Name** MAML2**Synonyms** KIAA1819**Function**

Acts as a transcriptional coactivator for NOTCH proteins. Has been shown to amplify NOTCH-induced transcription of HES1. Potentiates activation by NOTCH3 and NOTCH4 more efficiently than MAML1 or MAML3.

**Cellular Location**

Nucleus speckle. Note=Nuclear, in a punctate manner

**Tissue Location**

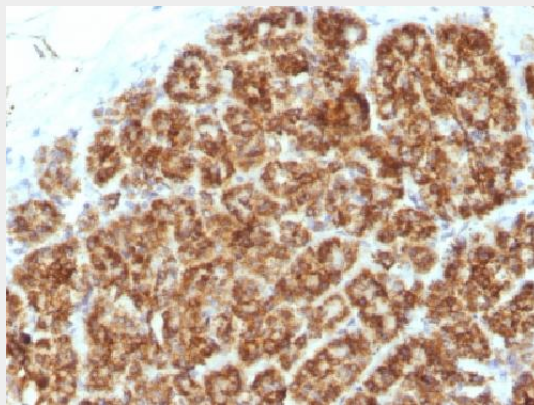
Widely expressed with high levels detected in placenta, salivary gland and skeletal muscle

### Anti-MAML2 Antibody - Protocols

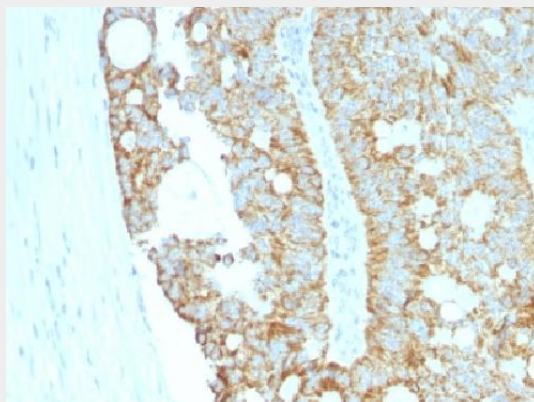
Provided below are standard protocols that you may find useful for product applications.

- [Western Blot](#)
- [Blocking Peptides](#)
- [Dot Blot](#)
- [Immunohistochemistry](#)
- [Immunofluorescence](#)
- [Immunoprecipitation](#)
- [Flow Cytometry](#)
- [Cell Culture](#)

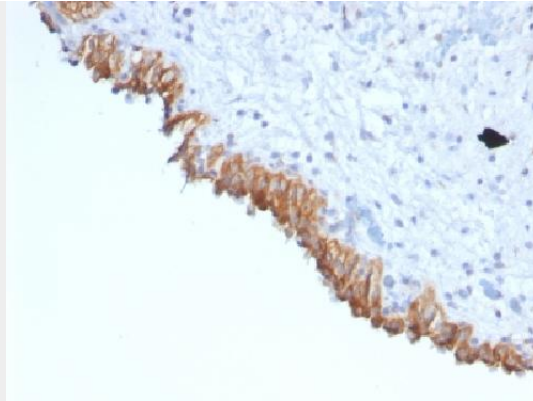
### Anti-MAML2 Antibody - Images



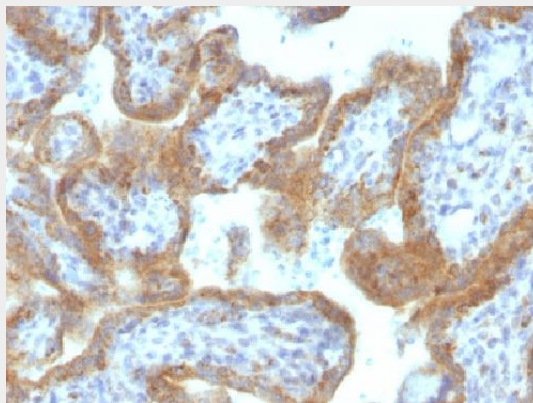
Formalin-fixed, paraffin-embedded Human Pancreas stained with MAML2 Monoclonal Antibody (MAML2/1302).



Formalin-fixed, paraffin-embedded Human Colon Carcinoma stained with MAML2 Monoclonal Antibody (MAML2/1302).



Formalin-fixed, paraffin-embedded Human Bladder Carcinoma stained with MAML2 Monoclonal Antibody (MAML2/1302).



Formalin-fixed, paraffin-embedded Human Placenta stained with MAML2 Monoclonal Antibody (MAML2/1302).

### **Anti-MAML2 Antibody - Background**

MAML2 (mastermind-like protein 2), also known as MAM2, MAM3 or MLLMAML2, is a nuclear speckle protein that acts as a transcriptional co-activator for Notch receptors. The Notch signaling pathway influences cell fate by regulating the ability of precursor cells to properly respond to developmental signals. MAML2 is a member of the mastermind-like family of proteins that are human homologs of the *Drosophila melanogaster* mastermind protein. Through its N-terminal region, MAML2 interacts with the ankyrin repeats of the Notch proteins Notch 1, Notch 2, Notch 3 and Notch 4. This interaction leads to formation of a DNA-binding complex with the Notch proteins and RBP-J $\kappa$ ; a complex that can then induce HES1 gene expression. While the N-terminal domain of MAML2 is essential for proper Notch binding, the C-terminal domain of MAML2 is essential for transcriptional activation. A chromosomal aberration involving the gene encoding MAML2 is implicated in mucoepidermoid carcinomas, clear cell hidradenomas and benign Warthin tumors.