

Anti-Wilm\'s Tumor 1 (WT1) Antibody
Recombinant Rabbit Monoclonal Antibody
Catalog # AH13580**Specification**

Anti-Wilm\'s Tumor 1 (WT1) Antibody - Product Information

Application	,14,3,4,
Primary Accession	P19544
Other Accession	591980
Reactivity	Human
Host	Rabbit
Clonality	Monoclonal
Isotype	Rabbit / IgG, kappa
Calculated MW	49188

Anti-Wilm\'s Tumor 1 (WT1) Antibody - Additional Information**Gene ID** 7490**Other Names**

WT1; AWT1; FWT1; GUD; NPHS4; WAGR; Wilms tumor 1

Format

200ug/ml of Ab purified by Protein A/G. Prepared in 10mM PBS with 0.05% BSA & 0.05% azide. Also available WITHOUT BSA & azide at 1.0mg/ml.

Storage

Store at 2 to 8°C. Antibody is stable for 24 months.

Precautions

Anti-Wilm\'s Tumor 1 (WT1) Antibody is for research use only and not for use in diagnostic or therapeutic procedures.

Anti-Wilm\'s Tumor 1 (WT1) Antibody - Protein Information**Name** WT1**Function**

Transcription factor that plays an important role in cellular development and cell survival (PubMed: [7862533](http://www.uniprot.org/citations/7862533)). Recognizes and binds to the DNA sequence 5'-GCG(T/G)GGGCG-3' (PubMed: [17716689](http://www.uniprot.org/citations/17716689), PubMed: [25258363](http://www.uniprot.org/citations/25258363), PubMed: [7862533](http://www.uniprot.org/citations/7862533)). Regulates the expression of numerous target genes, including EPO. Plays an essential role for development of the urogenital system. It has a tumor suppressor as well as an oncogenic role in tumor formation. Function may be isoform-specific: isoforms lacking the KTS motif may act as transcription factors (PubMed: [15520190](http://www.uniprot.org/citations/15520190)).

Isoforms containing the KTS motif may bind mRNA and play a role in mRNA metabolism or splicing (PubMed:16934801). Isoform 1 has lower affinity for DNA, and can bind RNA (PubMed:19123921).

Cellular Location

Nucleus. Nucleus, nucleolus. Cytoplasm. Note=Isoforms lacking the KTS motif have a diffuse nuclear location (PubMed:15520190). Shuttles between nucleus and cytoplasm. {ECO:0000250, ECO:0000269|PubMed:15520190} [Isoform 4]: Nucleus, nucleoplasm

Tissue Location

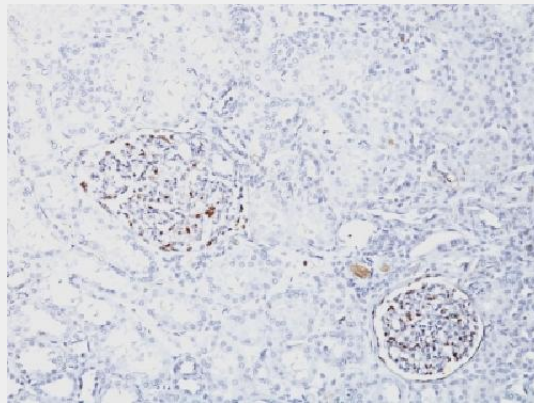
Expressed in the kidney and a subset of hematopoietic cells

Anti-Wilm's Tumor 1 (WT1) Antibody - Protocols

Provided below are standard protocols that you may find useful for product applications.

- [Western Blot](#)
- [Blocking Peptides](#)
- [Dot Blot](#)
- [Immunohistochemistry](#)
- [Immunofluorescence](#)
- [Immunoprecipitation](#)
- [Flow Cytometry](#)
- [Cell Culture](#)

Anti-Wilm's Tumor 1 (WT1) Antibody - Images



Formalin-fixed, paraffin-embedded Human Kidney stained with Wilm's Tumor Recombinant Rabbit Monoclonal Antibody (WT1/1434R).

Anti-Wilm's Tumor 1 (WT1) Antibody - Background

Recognizes a 47-55kDa-tumor suppressor protein, identified as Wilm's Tumor (WT1) protein. The antibody reacts with all isoforms of the full-length WT1 and also identifies WT1 lacking exon 2-encoded amino acids, frequently found in subsets of sporadic Wilm s tumors. WT1, a sporadic and familial pediatric kidney tumor, is genetically heterogeneous. Wilm s tumor is associated with mutations of WT1, a zinc-finger transcription factor that is essential for the development of the metanephric kidney and the urogenital system. The WT1 gene is normally expressed in fetal kidney and mesothelium, and its expression has been suggested as a marker for Wilm s tumor and mesothelioma. WT1 protein has been identified in proliferative mesothelial cells, malignant

mesothelioma, ovarian carcinoma, gonadoblastoma, nephroblastoma, and desmoplastic small round cell tumor. Lung adenocarcinomas rarely stain positive with this antibody. WT1 protein expression in mesothelial cells has become a reliable marker for the diagnosis of mesotheliomas.