

Anti-VLDL-Receptor Antibody
Mouse Monoclonal Antibody
Catalog # AH13570**Specification**

Anti-VLDL-Receptor Antibody - Product Information

Application	,1,14,3,4,
Primary Accession	P98155
Other Accession	370422
Reactivity	Human, Rat
Host	Mouse
Clonality	Monoclonal
Isotype	Mouse / IgG1
Calculated MW	96098

Anti-VLDL-Receptor Antibody - Additional Information**Gene ID** 7436**Other Names**

Very low-density lipoprotein receptor; VLDL receptor; VLDL-R; VLDLR

Format

200ug/ml of Ab purified from Bioreactor Concentrate by Protein A/G. Prepared in 10mM PBS with 0.05% BSA & 0.05% azide. Also available WITHOUT BSA & azide at 1.0mg/ml.

Storage

Store at 2 to 8°C. Antibody is stable for 24 months.

Precautions

Anti-VLDL-Receptor Antibody is for research use only and not for use in diagnostic or therapeutic procedures.

Anti-VLDL-Receptor Antibody - Protein Information**Name** VLDLR**Function**

Multifunctional cell surface receptor that binds VLDL and transports it into cells by endocytosis and therefore plays an important role in energy metabolism. Binds also to a wide range of other molecules including Reelin/RELN or apolipoprotein E/APOE- containing ligands as well as clusterin/CLU (PubMed: [24381170](http://www.uniprot.org/citations/24381170)), PubMed: [30873003](http://www.uniprot.org/citations/30873003)). In the off-state of the pathway, forms homooligomers or heterooligomers with LRP8 (PubMed: [30873003](http://www.uniprot.org/citations/30873003)). Upon binding to ligands, homooligomers are rearranged to higher order receptor clusters that transmit the extracellular RELN signal to intracellular signaling processes by binding to DAB1 (PubMed: [30873003](http://www.uniprot.org/citations/30873003))

target="_blank">30873003). This interaction results in phosphorylation of DAB1 leading to the ultimate cell responses required for the correct positioning of newly generated neurons. Later, mediates a stop signal for migrating neurons, preventing them from entering the marginal zone (By similarity).

Cellular Location

Cell membrane; Single-pass type I membrane protein Membrane, clathrin-coated pit; Single-pass type I membrane protein

Tissue Location

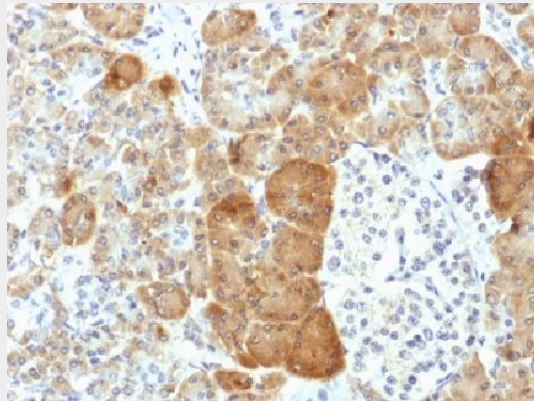
Abundant in heart and skeletal muscle; also ovary and kidney; not in liver

Anti-VLDL-Receptor Antibody - Protocols

Provided below are standard protocols that you may find useful for product applications.

- [Western Blot](#)
- [Blocking Peptides](#)
- [Dot Blot](#)
- [Immunohistochemistry](#)
- [Immunofluorescence](#)
- [Immunoprecipitation](#)
- [Flow Cytometry](#)
- [Cell Culture](#)

Anti-VLDL-Receptor Antibody - Images



Formalin-fixed, paraffin-embedded human Pancreas stained with VLDL-Receptor Monoclonal Antibody (VLDLR/1337).

Anti-VLDL-Receptor Antibody - Background

VLDLR (very low density lipoprotein receptor) is a member of the LDL receptor gene family, which includes LDL receptor, LRP, megalin, VLDLR and ApoER2. The LDL receptor family is characterized by a cluster of cysteine-rich class A repeats, epidermal growth factor (EGF)-like repeats, YWTD repeats and an O-linked sugar domain. VLDLR associates with RAP (receptor associated protein) during receptor folding, and RAP facilitates the secretion of the extracellular region of VLDLR. VLDLR is thought to mediate the interaction of extracellular Reelin and cytosolic mDab1 (mammalian disabled protein), which activates a tyrosine kinase. This pathway regulates the migration of neurons along the radial glial fiber network during brain development.