

Anti-Topoisomerase II alpha Antibody
Mouse Monoclonal Antibody
Catalog # AH13546**Specification**

Anti-Topoisomerase II alpha Antibody - Product Information

Application	,1,14,3,4,
Primary Accession	P11388
Other Accession	156346
Reactivity	Human, Mouse
Host	Mouse
Clonality	Monoclonal
Isotype	Mouse / IgG2b, kappa
Calculated MW	174385

Anti-Topoisomerase II alpha Antibody - Additional Information

Gene ID 7153

Other Names

ATP hydrolyzing DNA topoisomerase II alfa; DNA gyrase; DNA topoisomerase (ATP hydrolyzing); DNA topoisomerase 2 alpha; DNA topoisomerase II 170kD; DNA topoisomerase II alpha; DNA Topoisomerase2; TOP2A; Topoisomerase DNA II alpha 170kDa; TP2A

Format

200ug/ml of Ab purified from Bioreactor Concentrate by Protein A/G. Prepared in 10mM PBS with 0.05% BSA & 0.05% azide. Also available WITHOUT BSA & azide at 1.0mg/ml.

Storage

Store at 2 to 8°C. Antibody is stable for 24 months.

Precautions

Anti-Topoisomerase II alpha Antibody is for research use only and not for use in diagnostic or therapeutic procedures.

Anti-Topoisomerase II alpha Antibody - Protein Information

Name TOP2A

Synonyms TOP2

Function

Key decatenating enzyme that alters DNA topology by binding to two double-stranded DNA molecules, generating a double-stranded break in one of the strands, passing the intact strand through the broken strand, and religating the broken strand (PubMed: [17567603](http://www.uniprot.org/citations/17567603)), PubMed: [18790802](http://www.uniprot.org/citations/18790802), PubMed: [22013166](http://www.uniprot.org/citations/22013166)), PubMed: [22013166](http://www.uniprot.org/citations/22013166)), PubMed: [22013166](http://www.uniprot.org/citations/22013166)), PubMed: [22013166](http://www.uniprot.org/citations/22013166)), PubMed: [22013166](http://www.uniprot.org/citations/22013166))

<http://www.uniprot.org/citations/22323612> target="_blank">22323612). May play a role in regulating the period length of BMAL1 transcriptional oscillation (By similarity).

Cellular Location

Cytoplasm. Nucleus, nucleoplasm. Nucleus. Nucleus, nucleolus

Tissue Location

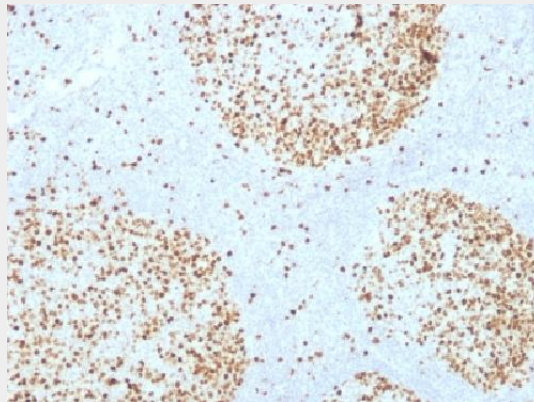
Expressed in the tonsil, spleen, lymph node, thymus, skin, pancreas, testis, colon, kidney, liver, brain and lung (PubMed:9155056). Also found in high-grade lymphomas, squamous cell lung tumors and seminomas (PubMed:9155056)

Anti-Topoisomerase II alpha Antibody - Protocols

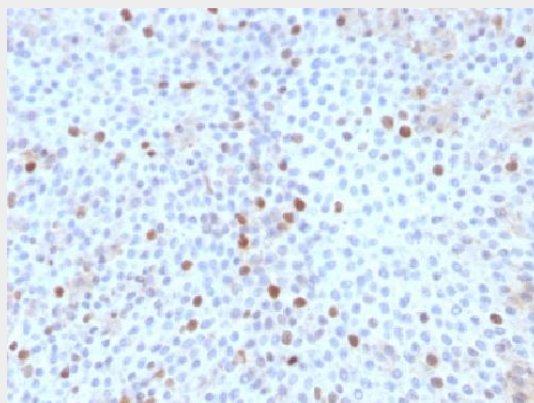
Provided below are standard protocols that you may find useful for product applications.

- [Western Blot](#)
- [Blocking Peptides](#)
- [Dot Blot](#)
- [Immunohistochemistry](#)
- [Immunofluorescence](#)
- [Immunoprecipitation](#)
- [Flow Cytometry](#)
- [Cell Culture](#)

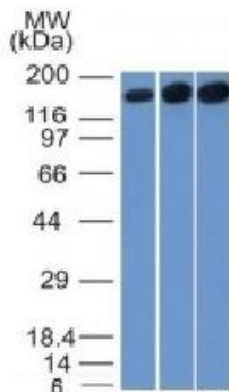
Anti-Topoisomerase II alpha Antibody - Images



Formalin-fixed, paraffin-embedded Human Tonsil stained with Topoisomerase II alpha Monoclonal Antibody (TOP2A/1361).



Formalin-fixed, paraffin-embedded Human Bladder Carcinoma stained with Topoisomerase II alpha Monoclonal Antibody (TOP2A/1361).



Western Blot of HepG2, HeLa and 3T3 Cell Lysate using Topo II alpha, Monoclonal Antibody (TOP2A/1361).

Anti-Topoisomerase II alpha Antibody - Background

It recognizes a 170kDa protein, which is identified as topoisomerase II α . It shows no cross-reaction with Topoisomerase II β or I. Topo II α plays important roles in synthesis and transcription of DNA as well as chromosomal segregation during mitosis. It is reported to be a sensitive and specific marker of late S-, G2- & M-phases in transformed and developmentally regulated normal cells. Topo II α is also implicated in drug resistance of tumor cells.