

**Anti-GCDFP-15 Antibody**  
**Mouse Monoclonal Antibody**  
**Catalog # AH13434****Specification**

---

**Anti-GCDFP-15 Antibody - Product Information**

Application	,1,14,3,4,
Primary Accession	<a href="#">P12273</a>
Other Accession	<a href="#">99949</a>
Reactivity	Human
Host	Mouse
Clonality	Monoclonal
Isotype	Mouse / IgG2a, kappa
Calculated MW	16572

**Anti-GCDFP-15 Antibody - Additional Information****Gene ID** 5304**Other Names**

BRST-2; GCDFP-15; gp17; GPIP4; Gross cystic disease fluid protein 15; Prolactin-induced protein (PIP); Prolactin-inducible protein (PIP); Secretory actin-binding protein (SABP)

**Format**

200ug/ml of Ab purified from Bioreactor Concentrate by Protein A/G. Prepared in 10mM PBS with 0.05% BSA &amp; 0.05% azide. Also available WITHOUT BSA &amp; azide at 1.0mg/ml.

**Storage**

Store at 2 to 8°C. Antibody is stable for 24 months.

**Precautions**

Anti-GCDFP-15 Antibody is for research use only and not for use in diagnostic or therapeutic procedures.

**Anti-GCDFP-15 Antibody - Protein Information****Name** PIP**Synonyms** GCDFP15, GPIP4**Cellular Location**

Secreted.

**Tissue Location**

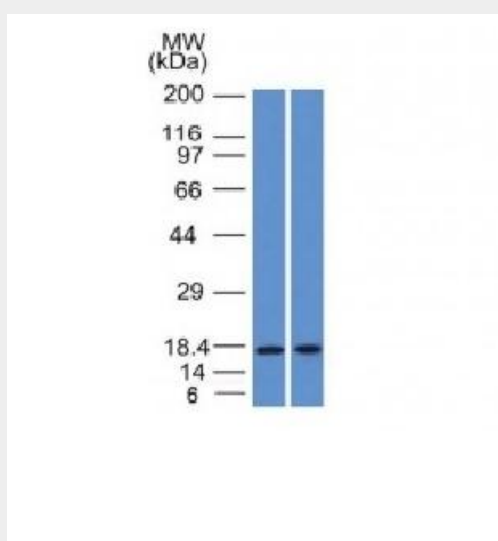
Expressed in pathological conditions of the mammary gland and in several exocrine tissues, such as the lacrimal, salivary, and sweat glands

## Anti-GCDFP-15 Antibody - Protocols

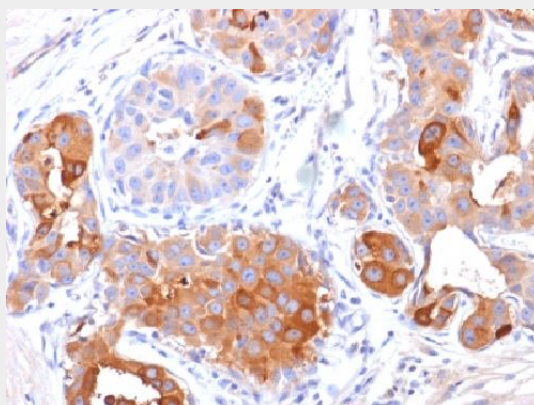
Provided below are standard protocols that you may find useful for product applications.

- [Western Blot](#)
- [Blocking Peptides](#)
- [Dot Blot](#)
- [Immunohistochemistry](#)
- [Immunofluorescence](#)
- [Immunoprecipitation](#)
- [Flow Cytometry](#)
- [Cell Culture](#)

## Anti-GCDFP-15 Antibody - Images



Western Blot Analysis (A) Human Pancreas (B) HepG2 Cell lysate Using GCDFP-15 Monoclonal Antibody (PIP/1571).



Formalin-fixed, paraffin-embedded human Breast Carcinoma stained with GCDFP-15 Monoclonal Antibody (PIP/1571).

## Anti-GCDFP-15 Antibody - Background

It recognizes a protein of 15kDa, identified as Gross cystic disease fluid protein 15 (GCDFP-15). It is a major protein component of benign breast gross cysts. It is a known marker of breast cancer, as it is found in approximately 50% of all breast cancer specimens. GCDFP-15, also known as PIP, for

prolactin inducible protein, is a prolactin and androgen controlled protein. This antibody is useful in the identification of metastatic breast carcinoma, or fluid analysis.