

**Anti-Ep-CAM / CD326 Antibody**  
**Recombinant Rabbit Monoclonal Antibody**  
**Catalog # AH13381****Specification**

---

**Anti-Ep-CAM / CD326 Antibody - Product Information**

Application	,1,14,3,4,
Primary Accession	<a href="#">P16422</a>
Other Accession	<a href="#">542050</a>
Reactivity	Human, Rat
Host	Rabbit
Clonality	Monoclonal
Isotype	Rabbit / IgG, kappa
Calculated MW	34932

**Anti-Ep-CAM / CD326 Antibody - Additional Information****Gene ID** 4072**Other Names**

Adenocarcinoma-associated Antigen; Cell Surface Glycoprotein Trop-1; EGP2; EGP314; EGP40; Epithelial Cell Adhesion Molecule; Epithelial Glycoprotein 314; ESA; KSA; TACD1; TROP1; Tumor-associated Calcium Signal Transducer 1 (TACSTD1)

**Format**

200ug/ml of Ab purified by Protein A. Prepared in 10mM PBS with 0.05% BSA & 0.05% azide. Also available WITHOUT BSA & azide at 1.0mg/ml.

**Storage**

Store at 2 to 8°C. Antibody is stable for 24 months.

**Precautions**

Anti-Ep-CAM / CD326 Antibody is for research use only and not for use in diagnostic or therapeutic procedures.

**Anti-Ep-CAM / CD326 Antibody - Protein Information****Name** EPCAM**Synonyms** GA733-2, M1S2, M4S1, MIC18, TACSTD1, TRO**Function**

May act as a physical homophilic interaction molecule between intestinal epithelial cells (IECs) and intraepithelial lymphocytes (IELs) at the mucosal epithelium for providing immunological barrier as a first line of defense against mucosal infection. Plays a role in embryonic stem cells proliferation and differentiation. Up-regulates the expression of FABP5, MYC and cyclins A and E.

**Cellular Location**

Lateral cell membrane; Single-pass type I membrane protein. Cell junction, tight junction.  
Note=Colocalizes with CLDN7 at the lateral cell membrane and tight junction

#### **Tissue Location**

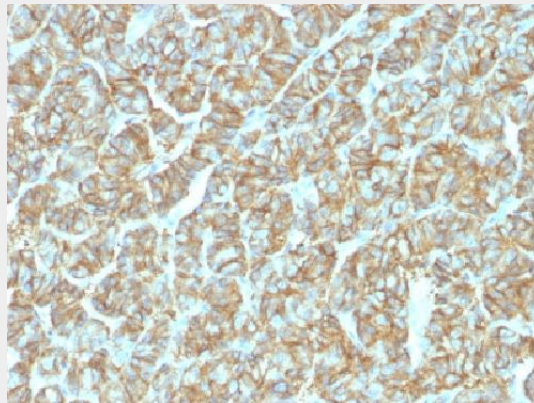
Highly and selectively expressed by undifferentiated rather than differentiated embryonic stem cells (ESC) Levels rapidly diminish as soon as ESC's differentiate (at protein levels). Expressed in almost all epithelial cell membranes but not on mesodermal or neural cell membranes. Found on the surface of adenocarcinoma.

#### **Anti-Ep-CAM / CD326 Antibody - Protocols**

Provided below are standard protocols that you may find useful for product applications.

- [Western Blot](#)
- [Blocking Peptides](#)
- [Dot Blot](#)
- [Immunohistochemistry](#)
- [Immunofluorescence](#)
- [Immunoprecipitation](#)
- [Flow Cytometry](#)
- [Cell Culture](#)

#### **Anti-Ep-CAM / CD326 Antibody - Images**



Formalin-fixed, paraffin-embedded human Thyroid Carcinoma stained with Ep-CAM Recombinant Rabbit Monoclonal Antibody (EGP40/1555R).

#### **Anti-Ep-CAM / CD326 Antibody - Background**

Recognizes a 40-43kDa transmembrane epithelial glycoprotein, identified as epithelial specific antigen (ESA), or epithelial cellular adhesion molecule (Ep-CAM). Ep-CAM is expressed on baso-lateral cell surface in most simple epithelia and a vast majority of carcinomas. This antibody has been used to distinguish adenocarcinoma from pleural mesothelioma and hepatocellular carcinoma. It is also useful in distinguishing serous carcinomas of the ovary from mesothelioma. This epithelial antigen plays an important role as a tumor-cell marker in lymph nodes from patients with esophageal carcinoma otherwise classified as node-negative. Epithelial antigen has also been suggested as a discriminator between basal cell and baso-squamous carcinomas, and squamous cell carcinoma of the skin.