

**Anti-Glycophorin A / CD235a (Erythrocyte Marker) Antibody**  
**Recombinant Rabbit Monoclonal Antibody**  
**Catalog # AH13287**

**Specification**

---

**Anti-Glycophorin A / CD235a (Erythrocyte Marker) Antibody - Product Information**

Application	,14,3,4,
Primary Accession	<a href="#">P02724</a>
Other Accession	<a href="#">434973</a> , <a href="#">654368</a> , <a href="#">2994</a>
Reactivity	Human
Host	Rabbit
Clonality	Monoclonal
Isotype	Rabbit / IgG, kappa
Calculated MW	16430

**Anti-Glycophorin A / CD235a (Erythrocyte Marker) Antibody - Additional Information**

**Gene ID** 2993

**Other Names**

Blood group--MN locus; GPA; GPERik; GpMilli; GPSAT; GYPA; MN sialoglycoprotein; MNS; PAS2; Sialoglycoprotein alpha

**Format**

200ug/ml of Ab purified by Protein A. Prepared in 10mM PBS with 0.05% BSA & 0.05% azide. Also available WITHOUT BSA & azide at 1.0mg/ml.

**Storage**

Store at 2 to 8°C. Antibody is stable for 24 months.

**Precautions**

Anti-Glycophorin A / CD235a (Erythrocyte Marker) Antibody is for research use only and not for use in diagnostic or therapeutic procedures.

**Anti-Glycophorin A / CD235a (Erythrocyte Marker) Antibody - Protein Information**

**Name** GYPA ([HGNC:4702](#))

**Function**

Component of the ankyrin-1 complex, a multiprotein complex involved in the stability and shape of the erythrocyte membrane (PubMed: <a href="http://www.uniprot.org/citations/35835865" target="\_blank">35835865</a>). Glycophorin A is the major intrinsic membrane protein of the erythrocyte. The N-terminal glycosylated segment, which lies outside the erythrocyte membrane, has MN blood group receptors. Appears to be important for the function of SLC4A1 and is required for high activity of SLC4A1. May be involved in translocation of SLC4A1 to the plasma membrane.

**Cellular Location**

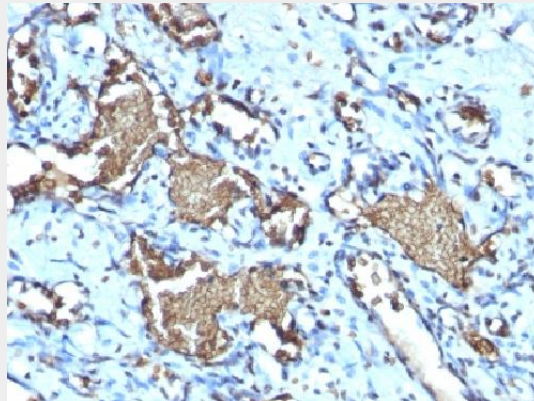
Cell membrane; Single-pass type I membrane protein Note=Appears to be colocalized with SLC4A1

## Anti-Glycophorin A / CD235a (Erythrocyte Marker) Antibody - Protocols

Provided below are standard protocols that you may find useful for product applications.

- [Western Blot](#)
- [Blocking Peptides](#)
- [Dot Blot](#)
- [Immunohistochemistry](#)
- [Immunofluorescence](#)
- [Immunoprecipitation](#)
- [Flow Cytometry](#)
- [Cell Culture](#)

## Anti-Glycophorin A / CD235a (Erythrocyte Marker) Antibody - Images



Formalin-fixed, paraffin-embedded human Angiosarcoma stained with Recombinant Rabbit Monoclonal Antibody (GYPA/1725R)

## Anti-Glycophorin A / CD235a (Erythrocyte Marker) Antibody - Background

Recognizes a sialoglycoprotein of 39kDa, identified as glycophorin A (GPA). It is present on red blood cells (RBC) and erythroid precursor cells. It has been shown that glycophorin acts as the receptor for Sandei virus and parvovirus. Glycophorins A (GPA) and B (GPB), which are single, trans-membrane sialoglycoproteins. GPA is the carrier of blood group M and N specificities, while GPB accounts for S and U specificities. GPA and GPB provide the cells with a large mucin like surface and it has been suggested this provides a barrier to cell fusion, so minimizing aggregation between red blood cells in the circulation.